

# Model 4525 Series Generation IV Radiation Portal Monitors



Ludlum Measurements, Inc.

## Features

- Large Size, High Sensitivity Industrial Duty Detectors
- Modular and Upgradable Systems
- Reliable Operation with Very Low False Positives
- Flexible Configurations Accommodate Up to Four Lanes, Each Arranged with 2 to 6 Detector Systems
- Bi-Directional Entry
- Real-time Central Data Logging, Reporting, and Alarm Notification
- Optional Camera Captures & Logs Vehicle Images
- User-Friendly Operation Bi-Directional Entry
- Superior Service and Support



## Introduction

The newly reconfigured Ludlum 4525-Generation IV Series of Radiation Portal Monitors (RPMs) represents state-of-the-art technology for detecting orphan radiation sources and NORM. The revised systems are upgradable, with a lower cost of ownership, and represent a lower initial purchase price.

The Gen IV series of RPM systems are ruggedized, large plastic scintillation systems that can be optimally arranged to monitor moving vehicles entering into the system. Each detector system can be configured with two to six large detectors. Real-time data acquisition and analysis is performed directly at each detector system and then reported to a central PC for logging, reporting, and alarm notification.

Up to four detector systems (lanes) can be networked together via Ethernet or wireless to the central PC where vehicles entering from either direction can be monitored in real time. Each detector system additionally includes a remote control/annunciator panel to support operator awareness, alarm acknowledgement, and if necessary, backup operation in the event the central PC is unavailable.

Data from all the system sensors are acquired and checked by powerful, field-tested, and time-proven algorithms designed to check each load vigorously in a multi-dimensional, multi-layered manner before declaring any load as clean. Any abnormality is immediately alarmed and annunciated both locally and remotely. An optional camera system can capture the image of the offending vehicle. The image is included in the logged data for permanent record keeping. Alarms can also be configured to automatically directly notify shift supervisors by e-mail if desired.

The system is designed for ease of use and can be customized to accommodate a wide variety of site and

application-specific criteria. Intuitive menus and controls combined with pre-defined automatic event handlers ensure each situation is handled properly and consistently.

### Gate Monitoring Software Package

Ludlum's System Computer comes equipped with a gate monitoring software program accommodating up to four separate 4525 configured systems (lanes) via a 10Base-T Ethernet connection or 802.11g wireless system. This monitoring software automatically collects and archives data from all available lanes, displays alarms, and generates reports. When equipped with optional cameras, the system can both automatically capture images of each vehicle passing through the system or only those causing an alarm, and include it in the database. The gate monitoring software contains three major components:

**SUPERVISOR:** collects all data, saves it in databases, and contains all parameter settings. It manifests alarms and provides all control over the system.

**ECHO:** is used for remote monitoring and shows exactly what the Supervisor is doing, but does not allow any control functions. This program performs all alerting and reporting functions, and up to 10 ECHO stations can be configured per each supervisor computer. Each ECHO station can monitor an unlimited number of supervisor computers.

**DATA VIEWER:** queries the databases (background, alarms, and event log), filtering records based on date, alarm, and lane number. The Data Viewer can also re-print an alarm report, print summary reports for user-defined date and time ranges, and create new databases based on the current search queries.

Ludlum Measurements, Inc. P.O. Box 810, Sweetwater, Texas 79556

Web: <http://www.ludlums.com> Tel: 800-622-0828 / 325-235-5494 / Fax: 325-235-4672 / Email: [ludlum@ludlums.com](mailto:ludlum@ludlums.com)

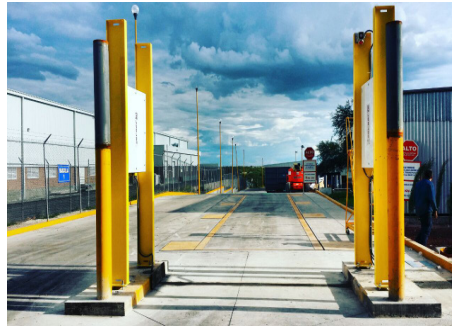
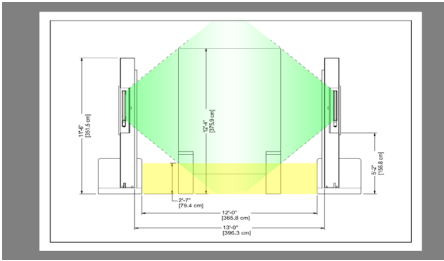
Note: specifications subject to change without notification. We are not responsible for errors or omissions.

Feb 2019

# Model 4525 Series Generation IV Radiation Portal Monitors



Ludlum Measurements, Inc.



## Available Detector Configurations

Ludlum offers several different Radiation Portal Monitor Systems, each equipped with a software program capable of handling up to four separate lanes. The 4525-Series Generation IV model number suffix reflects the total cubic inches of scintillation material used by the combined system. Generation IV systems are upgradable to more complex configurations allowing for versatility in application and a longer life of the system.

A Remote Annunciator Panel (Part No. L-4511-207) is included with each system.

Model	Number of Detectors	Part Number
4525-5000	2	48-4018
4525-7500	3	48-4020
4525-10000	4	48-4019
4525-12500	5	48-4021
4525-15000	6	48-4022

## Specifications

### Detectors

- EJ-200 plastic scintillator
- Dual 5.1 cm (2 in.) photomultiplier tube (PMT) design, delivers over 30% more efficiency than single PMT designs
- Hi gain, low-noise PMTs
- Thermally protected to avoid temperature shock, includes embedded temperature sensors to present operators the actual temperatures inside the detector enclosure
- 0.635 cm (0.25 in.) lead background reduction shielding on 5 sides
- NEMA 4X rated, stainless steel enclosure for environmental protection
- Low density, aluminum front door for enhanced low-energy measurement



### SYSTEM COMPUTER SPECIFICATIONS

- USB Keyboard with Touchpad
- Inkjet Printer
- Monitor 43.2 cm (17 inch) Black
- Computer: Fanless Industrial
- UPS (Uninterruptable Power Supply)
- Intel® Atom Processor
- 2 GB RAM
- 80 GB Hard Drive Integrated SSD
- Microsoft Windows® 7 Professional OS
- Integrated Intel® Video
- Integrated Intel® PRO Network
- Integrated Realtek Sound
- Wall Mount Bracket
- Weight: 18.1 kg (40 lb)
- Dimensions: 97.3 x 55.9 x 47.5 cm (39.8 x 22 x 18.7 in.) (H x W x D)



**Options available:** camera, camera housing, strobe/horn, detector stands, CD-ROM (visit [ludlums.com](http://ludlums.com) for more)

Ludlum Measurements, Inc. P.O. Box 810, Sweetwater, Texas 79556

Web: <http://www.ludlums.com> Tel: 800-622-0828 / 325-235-5494 / Fax: 325-235-4672 / Email: [ludlum@ludlums.com](mailto:ludlum@ludlums.com)

Note: specifications subject to change without notification. We are not responsible for errors or omissions.

## Model 4525-Series GEN IV Included Accessories



Ludlum Measurements, Inc.



Part No.: 4511-207

LED Indicators for:

- power OK
- checking
- gamma alarm
- overspeed
- instrument fail
- using battery power
- reset

**Remote Display:** with 30.5 m (100 ft) cable, audio annunciator upon alarm, and pushbutton to silence and reset alarm.

## Model 4525 Series - Optional Accessories



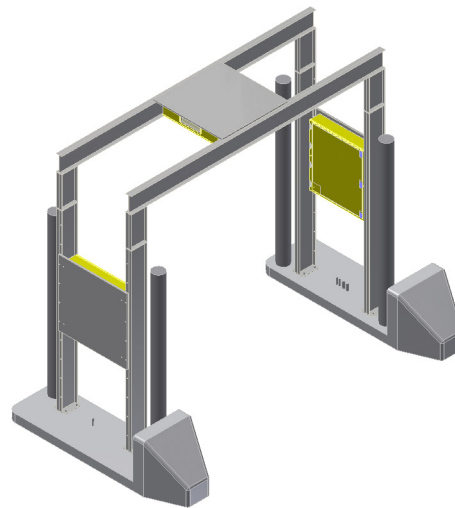
### Indoor/Outdoor Camera

An all-in-one HD1089p color camera designed for indoor or outdoor use, with Day/Night sensitivity for low light or exterior locations. In addition, this camera has Direct-to-Storage (DTS) recording. Dual-codec functionality for simultaneous H.264 (MPEG 4, Part 10) and MJPEG video streaming, at 30 fps and is Ethernet-capable. May be mounted on wall, ceiling, or parapet.

Part No. 2312288

Model 4525-7500 Gen IV System (*right*) featuring adjustable, flange-mounted detector boxes, and improved lightning strike suppression.

Model 4525-Series Gen IV systems are modular, upgradable, and are available with lightning suppression and protection. Non-standard lead shielding can be provided. Contact LMI for details.



### Strobe / Horn with 15 m (50 ft) cable



A high-visibility red strobe and loud horn provide additional warning when an alarm point is reached.

Part No.: 4384-880

Ludlum Measurements, Inc. P.O. Box 810, Sweetwater, Texas 79556

Web: <http://www.ludlums.com> Tel: 800-622-0828 / 325-235-5494 / Fax: 325-235-4672 / Email: [ludlum@ludlums.com](mailto:ludlum@ludlums.com)

Note: specifications subject to change without notification. We are not responsible for errors or omissions.