

Model 4525-7000

2-Detector Radiation Portal Monitor



Ludlum Measurements, Inc.

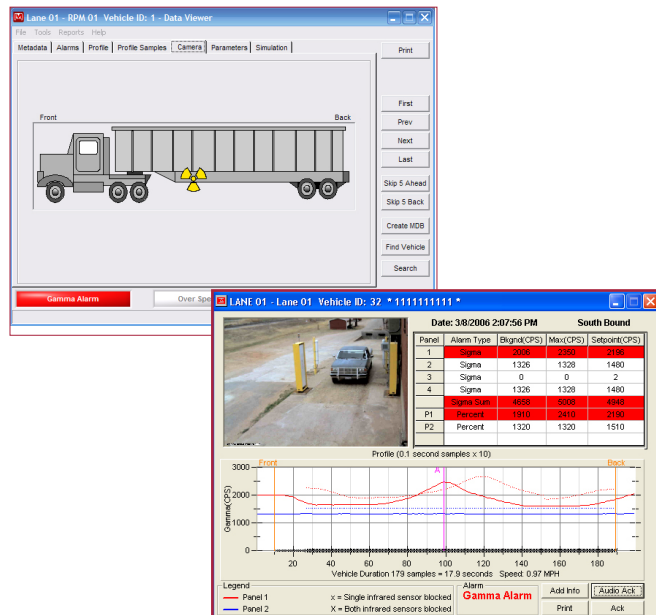
Introduction

The Ludlum 4525-Series of Radiation Gate Monitors represents state-of-the-art technology for detecting very low levels of radiation in vehicles. The ruggedized detectors offer the greatest detection volume, delivering the best sensitivity at the most affordable price. All detector data are connected to a central computer running Ludlum's Echo software, which performs all alerting, data logging, and reporting functions. This system can be networked with up to 10 PC stations.

Key features this system offers include very low false positives, 100 millisecond samples, vehicle counter, rail mode, real-time data logging, bi-directional entry, user-friendly operation, remote HV adjust, battery backup and superior service and support.



(Shown with optional detector stands)



SYSTEM COMPUTER SPECIFICATIONS

- Intel Atom 1.66 GHz processor
- Windows 7 Professional™
- 2 GB RAM
- 64 GB SSD
- LCD, 43.2 cm (17 in.) monitor
- mini USB keyboard with built-in touchpad
- supports up to four lanes with eight detectors per lane
- data logging with automatic daily back-up
- Ethernet network capability
- uninterruptible power supply
- inkjet photo printer
- eight relay outputs for options
- radiation profile
- weight 18.1 kg (40 lb)
- dimensions: 97.3 x 55.9 x 47.5 cm (39.75 x 22 x 18.73 in.) (H x W x D)



Specifications

Part Number: 48-3605

DETECTORS

- 2 Weather Protected Plastic Scintillator Detectors
- 3500 in³ Volume per Detector
- Reliable Operation with Few False Positives
- Real-Time Central Data Logging & Reporting
- Bi-directional Entry
- Rail Car Mode
- Optional Camera Image Capturing and dB Storage
- 8-Hour Battery Backup
- User-Friendly Operation

ALARM TYPES

1. Radiation
2. Overspeed
3. Sensor failure
4. Instrument failure
5. Low battery

INCLUDED ACCESSORIES

- Remote Annunciator Display: with audible and visible annunciation upon alarm, pushbutton to silence and reset alarm, and 30.5 m (100 ft) cable (PN: 4511-207)
- 76.2 m (250 ft) CAT 5e cable
- Dual Presence/Speed Sensors

OPTIONAL ACCESSORIES

- Strobe/Horn Assembly
- External Video Camera in Weatherproof Enclosure (each system can support one camera per lane)
- Detector Stand Set
- Point-to-point wireless network

Sept 2019

Ludlum Measurements, Inc. P.O. Box 810, Sweetwater, Texas 79556

Web: <http://www.ludlums.com> Tel: 800-622-0828 / 325-235-5494 / Fax: 325-235-4672 / Email: sales@ludlums.com

Note: specifications subject to change without notification. We are not responsible for errors or omissions.