

Model 4525-2400

Light & Non-Ferrous Metals Radiation Portal Monitor

Radiation Detection for a Safer World



Ludlum Measurements, Inc.

Introduction

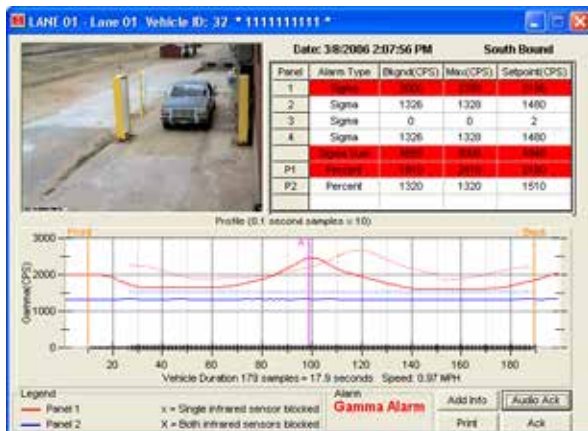
The Ludlum 4525-Series of Radiation Portal Monitors (RPMs) represents state-of-the-art technology for detecting low levels of radiation in vehicles. The ruggedized detectors offer the best sensitivity at the most affordable price. All detector data are connected to a central computer running Ludlum's Echo software, which performs all alerting, data logging, and reporting functions. This system can be networked with up to 10 PC stations.

Key features this system offers include very low false positives, 100 millisecond samples, vehicle counter, real-time data logging, bi-directional entry, user-friendly operation, remote HV adjust, battery backup and superior service and support.



Part Number: 48-3908

Shown with two of the optional detector stands
Part Number 4511-622



Specifications

DETECTORS

- 4 Weather Protected Plastic Scintillator Detectors
- Reliable Operation with Few False Positives
- Real-Time Central Data Logging & Reporting
- Bi-directional Entry
- Optional Camera Image Capturing and dB Storage
- 8-Hour Battery Backup
- User-Friendly Operation

ALARM TYPES

1. Radiation
2. Overspeed
3. Sensor failure
4. Instrument failure
5. Low battery

INCLUDED ACCESSORIES

- Remote Annunciator Panel (Model L-4511-207)
- Remote Light Indicators with Reset Button and 30.5 m (100 ft) Cable
- 76.2 m (250 ft) CAT 5e cable
- Dual Presence/Speed Sensors

OPTIONAL ACCESSORIES

- Strobe/Horn Assembly
- External Video Camera in Weatherproof Enclosure (each system can support one camera per lane)
- Detector Stand Set
- Point-to-point wireless network

SYSTEM COMPUTER SPECIFICATIONS

- x86 Processor
- Windows 7 operating system
- 2 GB RAM
- Integrated SSD storage
- LCD, 43.2 cm (17 in.) monitor
- Mini USB keyboard with built in touchpad
- Supports up to 4 lanes
- Data logging with automatic daily back-up
- Ethernet network capability
- Uninterruptible power supply
- Inkjet printer
- 8 relay outputs for options
- Radiation profile
- Weight: 18.1 kg (40 lb)
- Dimensions: 97.3 x 55.9 x 47.5 cm (39.8 x 22 x 18.7 in.) (H x W x D)

