

# Model 4525-10500

## Radiation Portal Monitor with 3 Detectors



Ludlum Measurements, Inc.

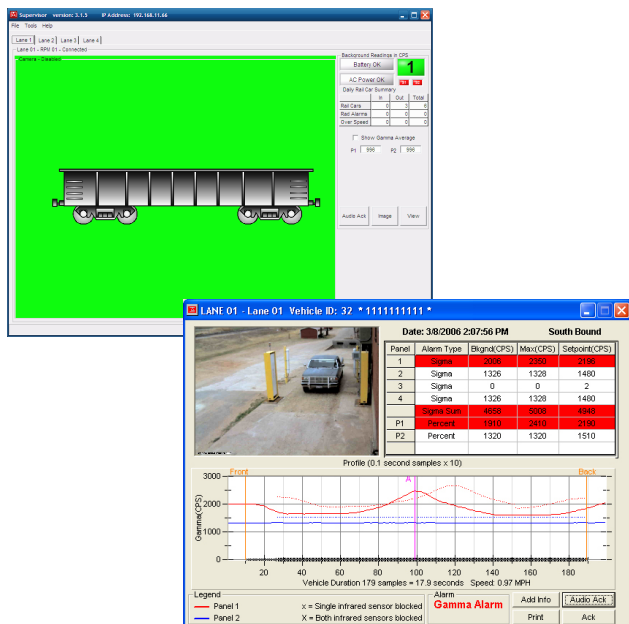
### Introduction

The Ludlum 4525-Series of Radiation Portal Monitors (RPMs) represents state-of-the-art technology for detecting very low levels of radiation in vehicles. The ruggedized detectors offer the greatest detection volume, delivering the best sensitivity at the most affordable price. All detector data are connected to a central computer running Ludlum's Echo software, which performs all alerting, data logging, and reporting functions. This system can be networked with up to 10 PC stations.

Key features this system offers include very low false positives, 100 millisecond samples, vehicle counter, rail mode, real-time data logging, bi-directional entry, user-friendly operation, remote HV adjust, battery backup and superior service and support.



(Shown with optional detector stands)



### Specifications

Part Number: 48-3606

#### DETECTORS

- 3 Weather Protected Plastic Scintillator Detectors
- 3500 in<sup>3</sup> Volume per Detector
- Reliable Operation with Few False Positives
- Real-Time Central Data Logging & Reporting
- Bi-directional Entry
- Rail Car Mode
- Optional Camera Image Capturing and dB Storage
- 8-Hour Battery Backup
- User-Friendly Operation

#### ALARM TYPES

1. Radiation
2. Overspeed
3. Sensor failure
4. Instrument failure
5. Low battery

#### INCLUDED ACCESSORIES

- Remote Annunciator Display: with audible and visible annunciation upon alarm, pushbutton to silence and reset alarm, and 30.5 m (100 ft) cable. (PN: 4511-207)
- 76.2 m (250 ft) CAT 5e cable
- Dual Presence/Speed Sensors

#### OPTIONAL ACCESSORIES

- Strobe/Horn Assembly
- External Video Camera in Weatherproof Enclosure (each system can support one camera per lane)
- Detector Stand Set
- Point-to-point wireless network

### SYSTEM COMPUTER SPECIFICATIONS

- USB Keyboard with Touchpad
- Inkjet Printer
- Monitor 43.2 cm (17 inch) Black
- Computer: Fanless Industrial
- UPS (Uninterruptable Power Supply)
- Intel® Atom Processor
- 2 GB RAM
- 80 GB Hard Drive Integrated SSD
- Microsoft Windows® 7 Professional OS
- Integrated Intel® Video
- Integrated Intel® PRO Network
- Integrated Realtek Sound
- Wall Mount Bracket
- Weight: 18.1 kg (40 lb)
- Dimensions: 97.3 x 55.9 x 47.5 cm (39.8 x 22 x 18.7 in.) (H x W x D)

