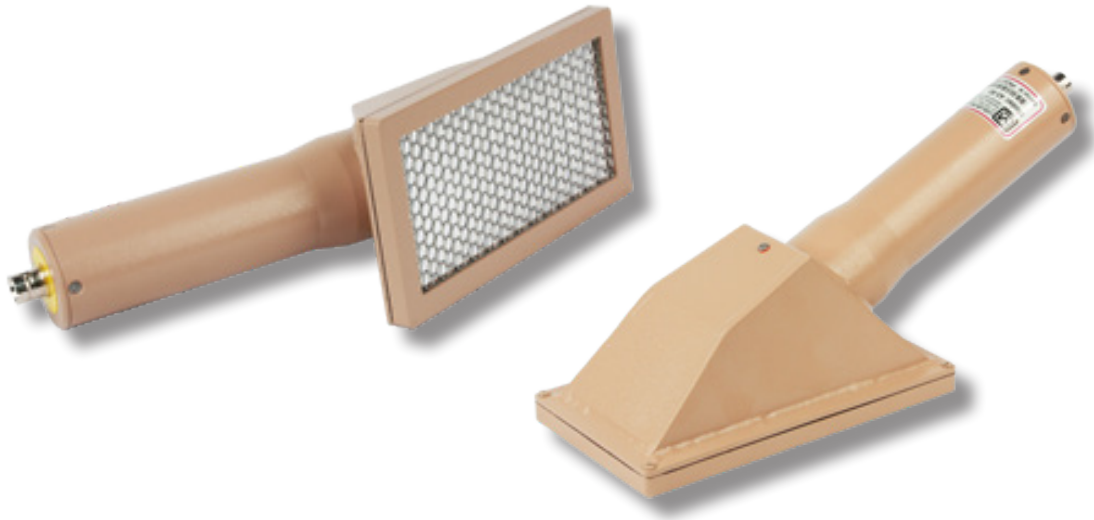


Model 43-90 Alpha Scintillation Detector



Specifications

Part Number: 47-2448

INDICATED USE: alpha survey

SUGGESTED INSTRUMENTS: general purpose survey meters, ratemeters, and scalars

DETECTOR TYPE: ZnS(Ag) scintillator

WINDOW: 0.8 mg/cm² metalized polyester

WINDOW AREA:

Active: approx. 125 cm² (19.4 in²)

Open: approx. 100 cm² (15.5 in²)

PROTECTIVE SCREEN: 0.76 mm (0.030 in.) stainless steel,
6.4 mm (0.25 in.) hex, 79% open
Outer Dimensions (L x W): 190 x 100 mm (7.5 x 3.9 in.)

EFFICIENCY (4 π): ²³⁹Pu: 20%

TYPICAL BACKGROUND: 3 cpm or less

DETECTOR UNIFORMITY: within 10% of average reading

PHOTOMULTIPLIER TUBE: 38 mm (1.5 in.) diameter

OPERATING VOLTAGE: typically 500 to 1000 V (1500 V max.)

TEMPERATURE RANGE: -20 to 50 °C (-4 to 122 °F)

ENVIRONMENTAL RATING: IP rating of 63

CONNECTOR: series "C", unless specified otherwise

CONSTRUCTION: aluminum with beige powder coating

SIZE (H x W x L): 10 x 10 x 33 cm (4 x 4 x 12.25 in.)

WEIGHT: 0.68 kg (1.5 lb)