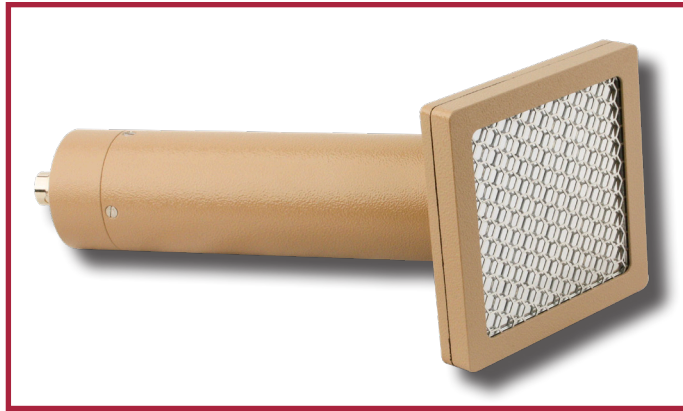


# Model 43-65-2 Alpha Beta Detector



Ludlum Measurements, Inc.



(two views shown)

## Specifications

Part Number: 47-2397

**INDICATED USE:** alpha and beta survey

**SUGGESTED INSTRUMENTS:** Ludlum Model 2224-1, Model 2360, Model 2929, Model 3030E

**CONNECTOR:** series "C" (others available)

**SCINTILLATORS:** ZnS(Ag) is adhered to 0.03 cm (0.01 in.) thick plastic scintillation material

**EFFICIENCY (4 $\pi$ ):** 20%—<sup>230</sup>Th; 20%—<sup>239</sup>Pu; 15% for <sup>99</sup>Tc; 20% for <sup>90</sup>Sr<sup>90</sup>Y; 1% for <sup>14</sup>C

**WINDOW:** 1.2 mg/cm<sup>2</sup> metalized polyester

**WINDOW AREA:** 63 cm<sup>2</sup> (9.8 in<sup>2</sup>) active, 50 cm<sup>2</sup> (7.8 in<sup>2</sup>) open

**BACKGROUND:** alpha 3 cpm or less; beta 200 cpm or less

**CROSS TALK:**

alpha to beta: <10%

beta to alpha: <1%

**DETECTOR UNIFORMITY:** within 10% of average reading

**TUBE:** 3.8 cm (1.5 in.) diameter magnetically shielded photomultiplier

**OPERATING VOLTAGE:** typically 500–1200 volts

**CONSTRUCTION:** aluminum with beige powder coat

**SIZE:** 10.2 x 10.2 x 24.9 cm (4 x 4 x 9.8 in.) (H x W x L)

**WEIGHT:** 0.5 kg (1.2 lb)

Ludlum Measurements, Inc. P.O. Box 810, Sweetwater, Texas 79556

Web: <http://www.ludlums.com> Tel: 800-622-0828 / 325-235-5494 / Fax: 325-235-4672 / Email: [sales@ludlums.com](mailto:sales@ludlums.com)

Note: specifications subject to change without notification. We are not responsible for errors or omissions.

May 2024