

HWM-550S

Free-Release Monitor for Gamma-detection of medium-sized items and barrels

The HWM-550S is Ludlum's manually fillable medium-sized clearance monitor of the HWM series with 550L volume and for up to 600kg of material in one measurement.

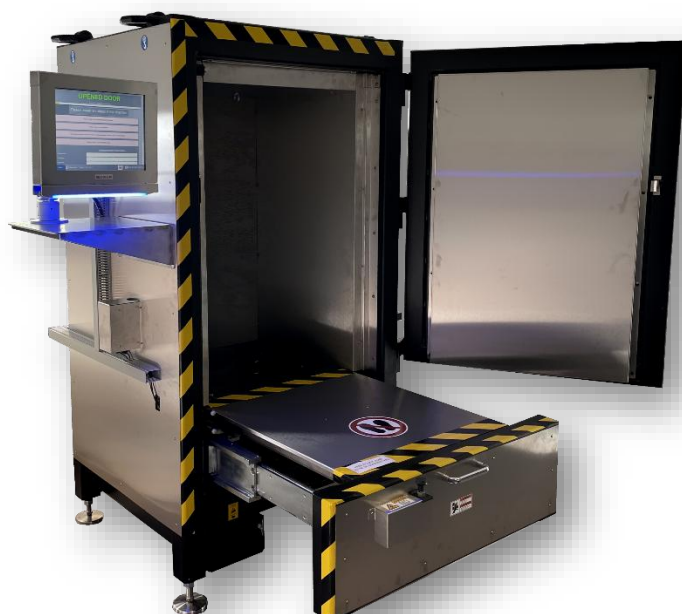
The standard equipment includes:

- 10 large-volume gamma plastic detectors in a 4π configuration, due to the size and arrangement of the detectors, there is up to 20% more detection area compare to conventional supplies
- 50mm Lead shielding, 75mm optional
- built-in weigh scale for up to 600kg
- manual door and drawer system
- forklift pockets
- powder-coated steel frame with easy to clean stainless steel lining inside and outside
- desk operation with 15"-Touch-Screen Display at the unit
- Fully automated measuring process with voice guidance
- Determination of nuclide composition using MCEA, multi-channel energy analysis
- Comes with energy and geometry calibration
- perfectly optimized handle

The HWM-550S allows a fast and reliable detection of Gamma radiation. Equipped with the latest measuring electronics and integrated scale, large loads can be fed in manually and easily.

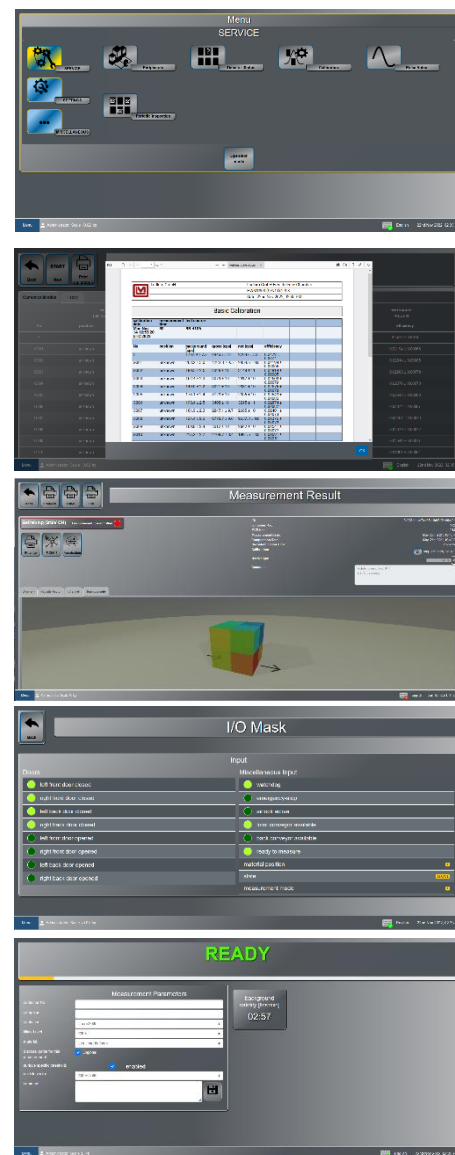


HWM-550S frontal view



HWM-550S with open door and drawer

| | |
|-------------------------|---|
| Standards: | The Monitor is compliant with the following Standards: CE, CSA / UL or EMC, ISO11929 |
| Detectors: | 10x Gamma-Plastic-Detectors Detector Volume ~160Ltr. Direct Connection of each Detector to the PC via USB |
| User Software: | Intuitive Operator Software with Touch-Screen Display, Voice guided measurement process, indications of results and measurement material position on the display and additional multi-channel energy analysis (MCEA) Web based for remote access possible |
| Electronics: | Status-light at the display audio output Integrated industrial PC interface to external units |
| Housing: | Steel frame with stainless steel cladding Front door with special hinge and handle Manual drawer system for barrel intake |
| Ext. Dimensions: | (H x W x D): 2.160 x 1.274x 1.138 mm ³ (width, plus display) |
| Chamber: | Vol.: (H x W x D): 1.100 x 700 x 700 mm ³ , 539 Ltr. |
| Shielding: | Standard: 50mm Lead Option: 75mm Lead |
| Sensors: | 1 door sensor with lock, integrated weighing scale for measurement goods |
| Weight: | Standard: ca. 5.000 kg With Option 75mm Lead: 7.200kg |
| Power Supply: | 230V / 16A / N / PE or 110V; internal 24V Integrated UPS for the controller, detectors, and PC. |



Key Benefits

- Intuitive operating software that is easy to use
- High throughput with low space requirements
- Loading via a manual drawer system for holding the material to be measured
- Export of measurement results and parameters in XML format via USB
- energy filtering settings to optimize background radiation discrimination
- Integrated small UPS for short-term bridging, expansion possible as an option
- Ergonomically positioned touch operated display
- Access to historical measurement data via integrated database



DMA; 21.11.2025; HWM-550S_en V57