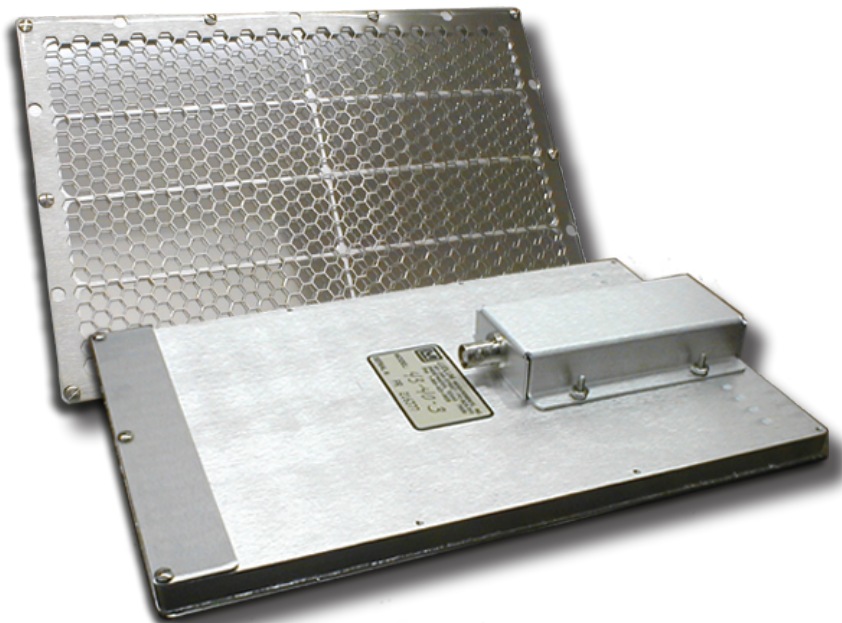


Model 43-40-3 Alpha Detector



Ludlum Measurements, Inc.



Part Number 47-3435
(two views)

Specifications

INDICATED USE: alpha survey

WORKING ENVIRONMENT: splashproof shields and desiccant-vented chamber for outdoor use

SUGGESTED INSTRUMENTS: Models 12, 16, 18, 2000, 2200, 2221, 2241, 2350

DETECTOR TYPE: air proportional

WINDOW: 0.4 mg/cm² aluminized mylar

WINDOW AREA: 320 cm² (49.6 in²) active; 253 cm² (39.2 in²) open

EFFICIENCY (4 π): 10% for ²³⁹Pu

BACKGROUND: 3 cpm or less

OPERATING VOLTAGE: altitude sensitive

sea level - 2050 volts

610 m (2000 ft) – 2000 volts

1524 m (5000 ft) – 1925 volts

2134 m (7000 ft) – 1875 volts

COUNTER THRESHOLD SETTING: typically -2 mV

CONSTRUCTION: anodized aluminum body with aluminum screen (65% open)

CONNECTOR: series "C" (others available)

TEMPERATURE RANGE: -20 to 50 °C (-4 to 122 °F), may be certified for operation from -40 to 65 °C (-40 to 150 °F)

SIZE: 3.3 x 16 x 24.9 cm (1.3 x 6.3 x 9.8 in.) (H x W x L)

WEIGHT: 1.59 kg (3.5 lb)