

**LUDLUM MODEL 26-3 FRISKER
USER'S MANUAL**

May 2024

**Serial Number PF011851
and Succeeding Serial Numbers**

STATEMENT OF WARRANTY

Ludlum Measurements, Inc. warrants the products covered in this manual to be free of defects due to workmanship, material, and design for a period of twelve months from the date of delivery. The calibration of a product is warranted to be within its specified accuracy limits at the time of shipment. In the event of instrument failure, notify Ludlum Measurements to determine if repair, recalibration, or replacement is required.

This warranty excludes the replacement of photomultiplier tubes, G-M and proportional tubes, and scintillation crystals which are broken due to excessive physical abuse or used for purposes other than intended.

There are no warranties, express or implied, including without limitation any implied warranty of merchantability or fitness, which extend beyond the description of the face there of. If the product does not perform as warranted herein, purchaser's sole remedy shall be repair or replacement, at the option of Ludlum Measurements. In no event will Ludlum Measurements be liable for damages, lost revenue, lost wages, or any other incidental or consequential damages, arising from the purchase, use, or inability to use product.

RETURN OF GOODS TO MANUFACTURER

If equipment needs to be returned to Ludlum Measurements, Inc. for repair or calibration, please send to the address below. All shipments should include documentation containing return shipping address, customer name, telephone number, description of service requested, and all other necessary information. Your cooperation will expedite the return of your equipment.

**LUDLUM MEASUREMENTS, INC.
ATTN: REPAIR DEPARTMENT
501 OAK STREET
SWEETWATER, TX 79556**

**800-622-0828 325-235-5494
FAX 325-235-4672**

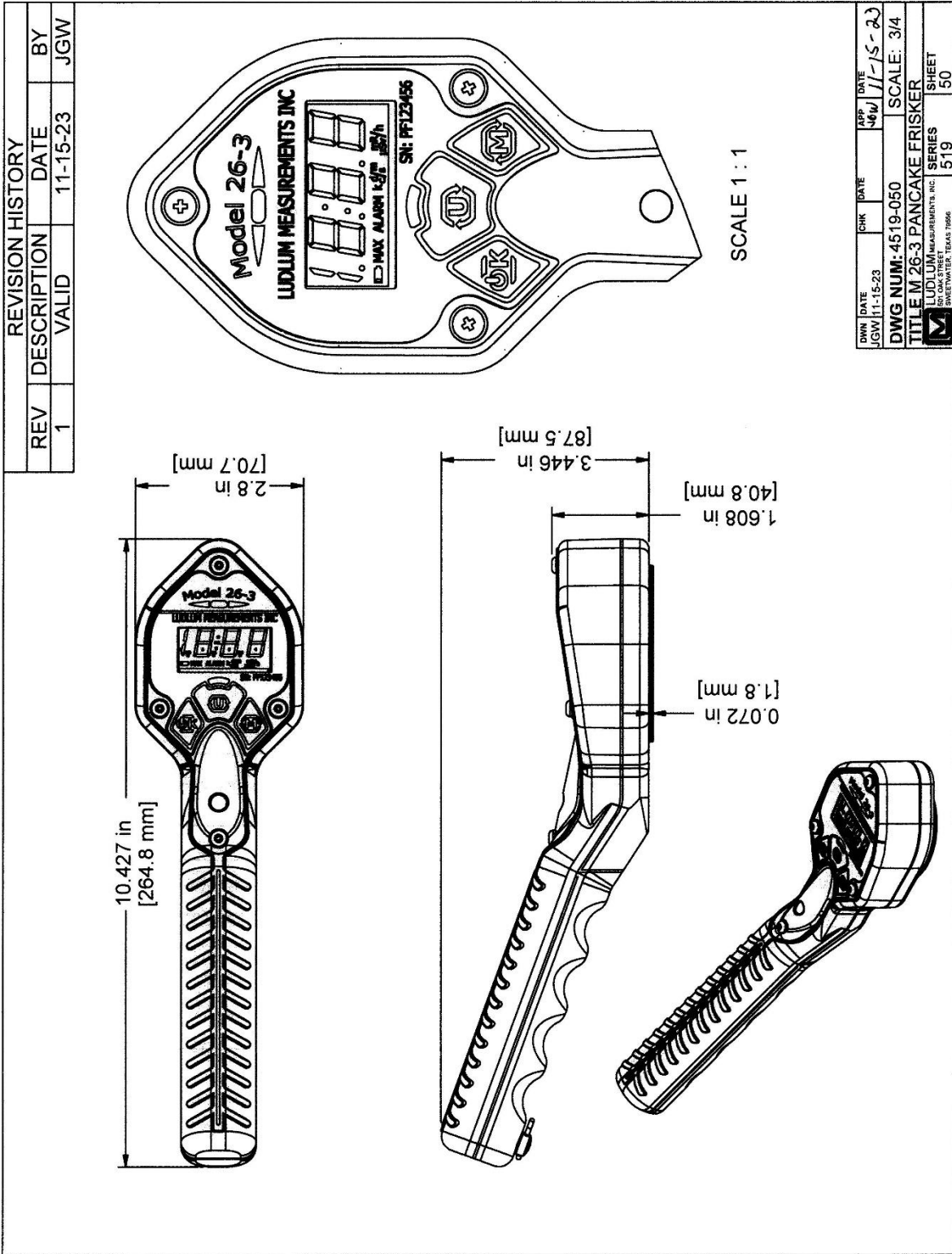
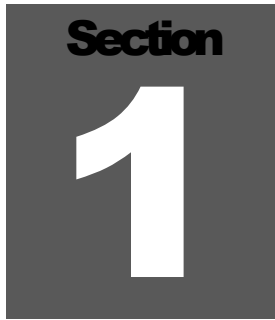


Table of Contents

<i>Introduction</i>	<i>1</i>
<i>Getting Started</i>	<i>2</i>
Unpacking and Repacking	2-1
Battery Installation	2-2
Instrument Operational Test	2-3
Detector Failure Diagnostic	2-4
Detector Over Range	2-5
Instrument Use and Controls	2-6
RATE Mode Operation	2-7
MAX Mode Operation	2-8
COUNT Mode Operation	2-9
<i>Specifications</i>	<i>3</i>
<i>Gamma Energy Compensation</i>	<i>4</i>
<i>Setup mode</i>	<i>5</i>
Setup Overview	5-1
Default Setup Values	5-2
Entering Setup Mode	5-3
Setup Mode Operation	5-4
<i>Safety Considerations</i>	<i>6</i>
Environmental Conditions for Normal Use	6-1
Warning Markings and Symbols	6-1
Cleaning and Maintenance Precautions	6-2
<i>Revision History</i>	<i>7</i>
<i>Recycling</i>	<i>8</i>
<i>Maintenance and Spare Parts</i>	<i>9</i>
Maintenance	9-1
Spare Parts	9-1

A dark gray square graphic with the word "Section" in white at the top and a large white number "1" in the center.

Introduction

The Model 26-3 is an ergonomic, lightweight instrument, which can be used for alpha/beta contamination frisking or for measuring gamma exposure or dose. It features the ability to measure radiation in count rate, exposure rate/dose, activity rate, integrated exposure/dose, time-averaged rates, and scaler counts. The Model 26-3 utilizes a standard 15 cm² (0.9 in²) Geiger-Mueller "pancake" detector, which can detect alpha, beta, or gamma radiation. Caution is needed when handling the instrument because of the thin radiation detector's window.

Three modes of operation are available for the Model 26-3 – RATE, MAX, and COUNT. RATE mode operation will display the current count, exposure, or activity rate. MAX mode is used to capture the highest count, activity, or exposure rate detected – useful for finding a peak rate, or frisking when the display is not visible. Primary and Secondary Units for RATE and MAX modes can be chosen from cps, cpm, Bq, dpm, mR/h, or μ Sv/h. COUNT mode allows the user to perform a count for a predetermined time. Depending on the Count Units chosen, the result can be a scaler count (in counts or disintegrations), a time-averaged rate (cpm, dpm, Bq, cps), a time-averaged exposure or dose (mR/h, μ Sv/h), or an integrated exposure or dose (mR or μ Sv).

Note: The use of the unit to measure gamma dose correctly can be enhanced by using an optional snap-on energy filter. Without this filter, the energy response of the pancake detector will over-respond to gamma energies in the 20-150 keV range. See the Gamma Energy Response graph and more detailed information in Section 4. Ludlum Measurements recommends the use of its Model 26 Ambient Dose Equivalent Filter (part # 2002-1050).

The instrument features a large backlit LCD (liquid crystal display), a piercing audio warning, and easy, intuitive use in a single-handed platform. A comfortable wrist strap and lanyard are also included for keeping the instrument close and secure. The unit body is made of

lightweight but durable plastic. It is intended for outdoor use and can resist splashing water.

There is also a headphone option available (not included). The instrument can be modified to include a standard 1/8 inch headphone jack (part number 4498-538).

The display will be automatically backlit if light levels are low. The display backlight can also be configured for “Continuous On” operation. RATE and MAX modes can be silent or utilize a “click” audio; the “click” audio is always silent during COUNT mode.

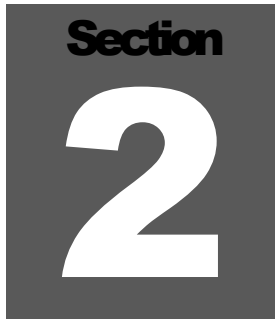
Setup of the instrument is accomplished through the front-panel buttons. The advanced user or administrator can set:

- Calibration Constant
- Dead Time Correction
- Efficiency
- Primary and Secondary Units
- Primary and Secondary Unit Alarm Levels
- Primary and Secondary Count Units
- Primary and Secondary Count Alarm Levels
- Response Time
- Auto-Response Rate (Fast or Slow)
- Available Operational Modes
- Count Time
- Low Light Threshold

Setup can be disabled via the internal switch on the Model 26-3 in order to protect settings.

The unit is operated with two alkaline AA batteries for operation from -40 to 65 °C (-40 to 150 °F). Battery life is approximately 500 hours under normal usage. A low-battery indicator on the LCD warns when less than 16 hours of battery life remain.

In 2019, an HV test plug was added to simplify measuring the HV and pulser calibration. This HV test plug is accessed by removing the battery cover. Ludlum cable 8303-1044 or similar can then be used to measure HV and to calibrate the instrument.

A dark gray square graphic with the word "Section" in white at the top and a large white number "2" in the center.

Getting Started

Unpacking and Repacking

Remove the calibration certificate and place it in a secure location. Remove the instrument and ensure that all of the items listed on the packing list are in the carton. Check individual item serial numbers and ensure calibration certificates match. The Model 26-3 serial number is located on a label on the front of the unit.

To return an instrument for repair or calibration, provide sufficient packing material to prevent damage during shipment. Be aware that the thin mica window of the detector may be damaged (imploded) because of pressure differentials if the unit is shipped by air. Protect the unit by putting it inside a sealed can or other protective enclosure.

Every returned instrument must be accompanied by an **Instrument Return Form**, which can be downloaded from the Ludlum website at www.ludlums.com. Find the form by clicking the “Support” tab and selecting “Service Center” from the drop-down menu. Then choose the appropriate Service Center division where you will find a link to the form.

Battery Installation

A low-battery indicator appears at the bottom of the LCD when less than 16 hours of battery life remain. When this indicator is present, follow these steps to replace the two standard AA batteries:



1. Grab the ring on the screw.
2. Turn the ring one quarter turn counter-clockwise.
3. Release and remove the battery cover.
4. Replace two each AA batteries.
5. Firmly insert the barb of the battery cover completely into the body of the Model 26-3.
6. Replace the cover and turn ring one quarter of a turn clockwise to secure.



Warning: If this procedure is not followed correctly, and the barb is not inserted into the body of the instrument correctly, the barb may break off.

Instrument Operational Test

Turn the instrument ON by pressing the ON/ACK button for about a second, and then releasing.

The instrument should activate all the LCD segments and the audio. Observe the device during this time. If any LCD segments are missing, or audio fails to work, the device is in need of repair. Please refer to Figure 1 below.

Figure 1: Startup display for Model 26-3, with all LCD segments shown.



The instrument then displays the firmware version number and activates the Alarm LED briefly. Should the Alarm LED fail to turn on, the device is in need of repair. Please refer to Figure 2 below.

Figure 2: Firmware version display and Alarm LED check shown.



The instrument will then move to normal operation, displaying the current rate for the Primary units (default: cpm).

The user may select the Secondary units (default: mR/hr) by pressing the Units button.

Ensure that the low-battery indicator is not present. If the low-battery indicator is present, replace the batteries as soon as possible. Should the instrument detect a battery voltage that is high enough to power on, but too low to safely operate, the display will blank and the low-battery icon will flash. Normal operation will not be available until the batteries have been replaced. Under extreme low-battery conditions, be aware that the unit may not even turn on or may turn itself off abruptly.

A reference reading with a check source, 1 μCi (37 kBq) of ^{137}Cs for example, should be obtained at the time the instrument is received in the field. Small check sources of radiation are available from Ludlum Measurements. While exempt from many regulations because of their small size, these sources are large enough to produce a response on this instrument. The detector's position is indicated by the circular screen on the back of the Model 26-3: the seam between the enclosure halves indicates the approximate center of the detector. If this procedure is done routinely with the same radiation source, instrument malfunction may be detected when anomalous readings are observed. If at any time the instrument fails to read within 20% of the reference reading when using the same check source, it should be sent to a calibration facility for recalibration and/or repair.

Example log reading:

Check Source # _____ Rate _____ Units _____

Once this procedure has been completed, the instrument is ready for use.

Detector Failure Diagnostic

Note that the Model 26-3 has its own diagnostic tests to ensure that the detector is functioning correctly. The Model 26-3 can detect when the radiation detector is malfunctioning and will flash the display to indicate a fault. If the detector stops detecting radiation for 60 seconds, normally through a puncture of the thin mica window, the Model 26-3 will flash a zero reading for the currently selected units. If this indication is observed, remove the unit from service and have it evaluated by a qualified repair and calibration technician.

Figure 3: Detector Failure display (shown for cpm); will also flash.



Detector Over Range

If the unit has an internal malfunction that causes it to count high or excessively, the unit flashes the maximum rate for the currently selected units as a warning. The user should ensure whether this is being caused by a high radiation field or by internal malfunction.

Figure 4: Detector Over Range (shown for $\mu\text{Sv/h}$); will also flash.



Instrument Use and Controls

With three front-panel buttons, the Ludlum Model 26-3 is simple and easy to use with minimal training required. Default operation is RATE mode, and the display shows the current count rate using the Primary units. Pressing the UNITS button will switch between Primary and Secondary units. Pressing the MODE button will switch the instrument to MAX mode, which will display the highest count rate detected. Pressing the MODE button again will switch it to COUNT mode, which will display the COUNT timer. Note that either or both of the MAX and COUNT modes can be locked out in the setup process.

See the Model 26-3 drawing at the beginning of this manual to reference the following controls:

ON/ACK button: Used to power the Model 26-3 ON and OFF, silence click audio, reset MAX mode, start/reset the COUNT Timer, and acknowledge audio alarms.

- Power On: Press for approximately one second and release (all LCD segments will activate, and firmware version will be shown).
- Power Off: Press for approximately five seconds. The display will show a 3, 2, 1 countdown for the final three seconds of shutdown. Releasing the ON/ACK button during shutdown will return the device to the previous state of operation. At completion of the shutdown count, the LCD will go blank.
- Normal Operation: Will silence 'click' audio in RATE and MAX modes, reset MAX mode display, start/reset COUNT Timer in COUNT mode, and acknowledge/silence audio in all modes of operation.

MODE button: Used to advance between the three operating modes, RATE, MAX, and COUNT. Note that MAX and/or COUNT mode may be disabled from use by the administrator or calibrator.

UNITS button: Used to switch between Primary and Secondary units in RATE and MAX modes. In COUNT mode, the UNITS button will switch between Primary and Secondary units unless a countdown is active. The UNITS button is disabled during an active countdown.

RATE Mode Operation

In RATE mode the current count rate will be displayed.

Pressing the UNITS button will switch the displayed value between the Primary and Secondary Units.

Under a non-alarm condition, the Alarm Status LED will be off; pressing the ON/ACK button will turn the “click” audio on/off.

If an alarm condition is present, pressing the ON/ACK button will acknowledge and turn off the continuous tone alarm audio. Under an alarm condition, the ALARM display indicator will remain on, and the Alarm Status LED will be flashing. Alarms are non-latching in RATE mode.

If other operational modes are available, pressing the MODE button will move to the next available operational mode.

Figure 5: RATE mode display showing typical background radiation rate and the low-battery icon.



MAX Mode Operation

While in MAX mode, the highest detected count rate (since the last reset) is displayed. The word MAX will be displayed when in MAX mode.

Pressing the UNITS button will switch the displayed value between the Primary and Secondary Units.

Under a non-alarm condition, the Alarm Status LED will be off; pressing the ON/ACK button will turn the “click” audio on/off. Pressing the ON/ACK button a second time will reset the display and enable the “click” audio.

If an alarm condition is present, pressing the ON/ACK button once will acknowledge and turn off the continuous tone alarm audio. (The “click” audio will remain as selected under non-alarm conditions.) Pressing the ON/ACK button a second time will reset the display and clear the alarm condition. Under an alarm condition, the ALARM display indicator will remain on, and the Alarm Status LED will be flashing. Alarms in MAX mode latch with the display.

If other operational modes are available, pressing the MODE button will move to the next available operational mode.

Figure 6: MAX mode operation display with ALARM indicator and alarm LED.



COUNT Mode Operation

When entering COUNT Mode from another operational mode, the currently selected COUNT Units will be displayed for approximately one second. The purpose of COUNT mode is to count for a predetermined amount of time, and to display the results on the display. Note that the predetermined count time can be from 1 second to 20 minutes, or can be set to zero to enable continuous counting until stopped by the user.

Count mode operation is very flexible, depending on the units chosen. A common choice is for the count mode to just perform a scaler count for a specified time, with a resulting answer in counts (equaling detected radiation events). If a result in terms of activity is desired, the scaler count can also be in units of "d" or disintegrations. But if the count units are chosen to be cpm or cps, then the resulting answer is an averaged count rate over the time interval. Similarly, if count units of Bq or dpm are chosen, the resulting answer is an averaged disintegration rate.

- ✓ NOTE: If the user desires the instrument to show results in terms of disintegrations/area (eg. dpm/100cm² or Bq/cm²), then the appropriate factor should be placed in the Efficiency parameter.

Other choices are to have count mode units of mR/h or μ Sv/h, in which case the COUNT mode result is an averaged exposure or dose rate. But if count mode units of mR or μ Sv are chosen, the result is shown in accumulated exposure or accumulated dose over the chosen count time. The following tables lists the possibilities:

UNITS	RESULT
c	counts per count time
d	disintegrations per count time
cpm, cps	count rate averaged over the count time
dpm, Bq	disintegration rate, averaged over the count time
mR/h, μ Sv/h	exposure or dose rate, averaged over the count time
mR, μ Sv	integrated exposure or dose over the count time

Audio 'clicks' are disabled in COUNT mode.

In COUNT mode, operation depends on the current state of the Count Timer.

When the Count Timer is Ready:

- The display will show the Count Time, and the Alarm Status LED will be off.
- Pressing the UNITS button will switch between the Primary and Secondary Count Units. The newly selected Count Units will be displayed for approximately one second, and the display will then return to the Count Timer.
- Pressing the ON/ACK button starts the Count Timer.
- If other operational modes are available, pressing the MODE button will move to the next available operational mode.

When the Count Timer is active:

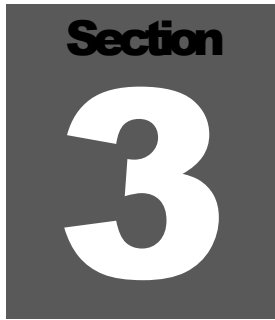
- The display will show the Count Time remaining.
- Pressing the ON/ACK button will reset the Count Timer.
- The UNITS button is disabled.
- If an alarm condition occurs, the display will alternate between the Count Time remaining and the Count Rate. The ALARM display indicator and the Alarm Status LEDs will turn on. Alarms are latching in COUNT mode.
- If other operational modes are available, pressing the MODE button will cancel the current Count Timer and move to the next available operational mode.

When the Count Timer has finished:

- The display will show either the accumulated total for c, d, mR, and μSv , or the timed ratemeter average for cps, cpm, Bq, dpm, or the average exposure or average dose in mR/h and $\mu\text{Sv/h}$.
- Pressing the UNITS button will switch between the Primary and Secondary Count Units. The newly selected Count Units will be displayed for approximately one second, and the display will then return to the accumulated total or timed ratemeter average, depending on the newly selected Count Units.
- Under a non-alarm condition, the Alarm Status LED will be off; pressing the ON/ACK button will reset the Count Timer.
- If an alarm condition occurred during the Timed Count, a continuous audio tone will sound, and the ALARM display indicator and the Alarm Status LED will turn on. Pressing the ON/ACK button once will acknowledge and turn off the continuous tone alarm audio. Pressing the ON/ACK button a second time will clear the alarm condition and reset the Count Timer. Alarms are latching in COUNT mode.
- If other operational modes are available, pressing the MODE button will move to the next available operational mode.

Figure 7: COUNT mode operation showing COUNT Timer of 10 minutes, 30 seconds.



A dark gray square with the word "Section" in white at the top and a large white number "3" in the center.

Specifications

Detector: pancake GM (Geiger-Mueller) detector, stainless steel screen

Linearity: $\pm 10\%$

Window Area: Active: 15.51 cm² (2.4 in²); Open: 12.26 cm² (1.9 in²)

Window Protective Screen: 79% open

Efficiency (4pi) Surface Plane:

Alpha: 11% for ²³⁹Pu

Beta: 14% for ⁹⁹Tc; 32% for ³²P; 2% for ¹⁴C; 22% for ⁹⁰Sr/Y;
0.2 % for ¹²⁵I

Gamma: 3300 cpm/mR/h or 5.5 cps/ μ Sv/h (¹³⁷Cs);
 $\leq 1\%$ for ^{99m}Tc

Resolving Time: approximately 110 μ sec as defined by IEC 60325

Alarms: rate and count alarm setpoints adjustable over the display range for Primary and Secondary units

Overload: high rate saturation protection, indicated by flashing display and audio alarm, prevents false display of lower count rates

Zero Protection: after 60 seconds of no pulses from detector, unit will flash a zero reading and the alarm audio will be triggered

LCD Display: 3½ digit LCD with large 12.7 mm (0.5 in.) digits, (k)cps, (k)cpm, (k)Bq, (k)dpm, mR(/h), μ Sv(/h), low-battery indicator, MAX, ALARM

Display Range:

- 0.0 cps to 19.9 kcps
- 0.00 cpm to 999 kcpm
- 0.0 Bq to 19.9 kBq
- 0.00 dpm to 999 kdpm
- 0.0 to 999 mR/h

- .000 to 1999 $\mu\text{Sv/h}$

Backlight: built-in ambient light sensor automatically activates low-power LED backlight, unless internal dip switch 1 is set to continuous-on.

User Controls:

- ON/OFF/Quiet – press to turn ON, tap to alternate between ‘click’ audio and QUIET, hold for OFF
- MODE – alternates between RATE (count rate), MAX (captures peak rate), and COUNT (preset count time) modes
- UNITS – alternates between Primary and Secondary units

Count Time Range: 1 second to 20 minutes, or "0" enables continuous counting until stopped by user

Click Audio: greater than 60 dB at 0.6 m (2 ft), approximately 4.5 kHz

Power: two alkaline “AA” batteries

Battery Life: approximately 1000 hours of operation (as low as 500 hours with backlight configured for continuous-on), 16-hour low-battery warning

Construction: high-impact plastic with water-resistant rubber seals and separate battery compartment

Environmental Rating: NEMA (National Electrical Manufacturers Association) rating of 3 or IP (Ingress Protection) rating of 53

Distance from Surface Plane to Grill: 0.32 cm (one-eighth inch)

Size: 4.6 x 6.9 x 27.2 cm (1.8 x 2.7 x 10.7 in.) (H x W x L)

Weight: 0.45 kg (1.0 lb)

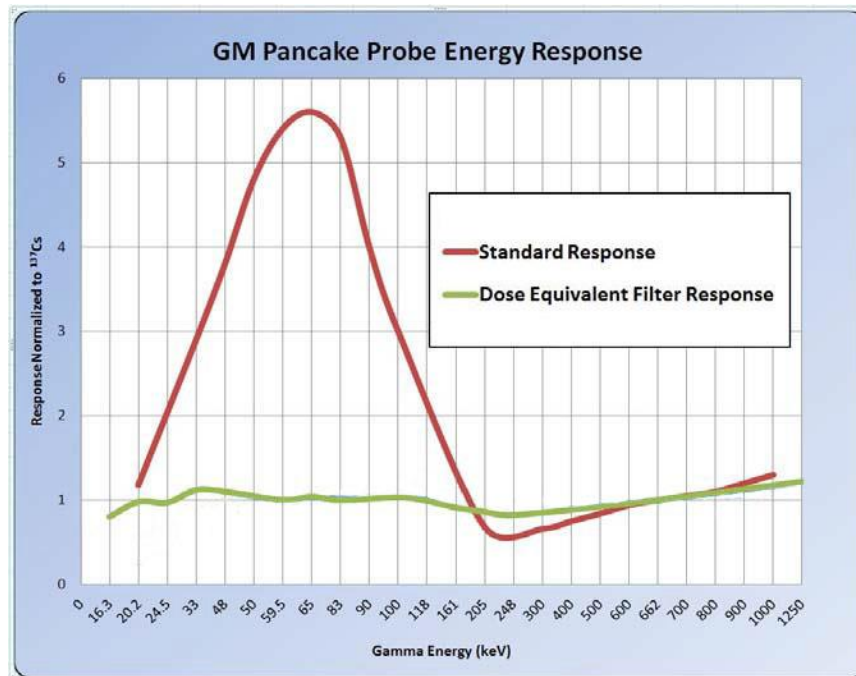
Section
4

Gamma Energy Compensation

The GM pancake detector has a significant over-response at lower energies between approximately 20 to 160 keV (see red line on graph below). Any dose measurements taken with an unfiltered GM pancake detector would have unacceptable errors at these lower energies.

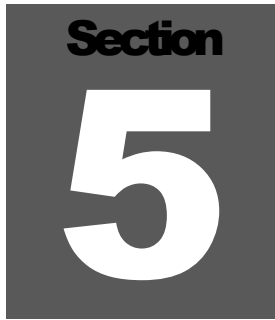
Ludlum Measurements offers a energy compensation filter that flattens the energy response of the Model 26-3 to facilitate measuring the ambient dose equivalent rate.

The filter developed by Ludlum Measurements flattens the response to within $\pm 20\%$ referenced to ^{137}Cs (662 keV) over an energy range of 20 keV to 1.2 MeV.



The filter snaps on across the face of any Model 26-3 frisker whenever this type of measurement is desired. The filter is then again easily removed to continue on with measuring contamination (cpm or Bq).

A filter can be purchased separately from the instrument or together with a new Model 26-3. **(The Model 26 Ambient Dose Equivalent Filter is LMI part # 2002-1050.)**

A dark gray square containing the word "Section" in a bold, sans-serif font at the top, and a large, white, bold number "5" in the center.

Setup Mode

Warning!

Only advanced users or administrators should consider changing any of the parameters in the following section. Incorrect settings could jeopardize the safety of users depending on this instrument.

Setup Overview

Your instrument has been shipped from Ludlum Measurements only after passing electronic checkout, a 30-hour burn-in process, and a careful calibration process. Calibration papers are supplied with each instrument shipped from Ludlum Measurements.

Recalibration should be accomplished after maintenance or adjustments have been performed on the instrument. Recalibration is not normally required following instrument cleaning or battery replacement. Recalibration does not require any special tools or software to perform.

Ludlum Measurements offers a full-service repair and calibration department. Not only do we repair and calibrate our own instruments, we also service most other manufacturers' instruments. Calibration procedures are available upon request for customers who choose to calibrate their own instruments.

Note:

Ludlum Measurements, Inc. recommends recalibration at intervals no greater than one year, assuming that regular operational checks are performed. Check the appropriate local, state, and federal regulations to determine required recalibration intervals.

Default Setup Values

Setup Parameter	Default Value	Notes
Calibration Constant	3.30	kcpm per mR/h
Dead Time Correction	75	Microseconds
Efficiency	15.0	Efficiency %
Primary Units	cpm	Counts per minute
Primary Units RATE/ MAX Mode Alarm Point	000	Disabled
Primary Count Units	c	Counts
Primary Count Alarm Point	000	Disabled
Secondary Units	mR/h	Non-SI exposure rate
Secondary Units RATE/ MAX Mode Alarm Point	000	Disabled
Secondary Count Units	mR	Non-SI exposure
Secondary Count Alarm Point	000	Disabled
Response Time	0	Enable Auto Response
Auto-Response Rate	F	Fast Auto Response
Operational Modes	0	All Modes Available
Count Time	1:00	One Minute
Low Light Threshold	55	

Entering Setup Mode

To enter setup mode, power down the Model 26-3, then turn the unit back ON. Following the display of the Firmware version, when the instrument has begun normal operation, press the MODE button three times (within four seconds) to enter Setup mode. Entry to Setup mode can be confirmed when the numeric portion of the display shows the Calibration Constant parameter, and no units (cps, cpm, Bq, dpm, mR/h, or $\mu\text{Sv/h}$) are displayed. If you simply wish to view the parameters, you may do so by not pressing any other buttons. The parameters will change every four seconds when no buttons are pressed, or the UNITS button can be pressed to advance to the next parameter. The unit will return automatically to normal operation after the last parameter is presented.

SETUP PROTECT: The Model 26-3 parameters can be protected from unauthorized changes via the internal switch located on the Model 26-3 circuit board. To change the switch, open the battery compartment and remove the batteries from the Model 26-3. Next, loosen the four captive Phillips head screws that fasten the detector cover.

Now turn the Model 26-3 over so that the detector is facing up. Gently remove the plastic case that covers the back of the instrument, paying careful attention not to lose the protective screen that covers the detector itself. Remove the protective screen, and gently lift the GM pancake detector and set it to the side. The DIP (dual in-line position) switch should now be visible below the detector retainer.

To protect the Model 26-3 from changes in Setup mode, slide DIP Switch 2 (closest to the battery compartment) to the ON (right) position. If DIP Switch 2 is in the OFF (left) position, changes are allowed in Setup mode. Once the DIP Switch is set as desired, gently replace the detector in the detector retainer. Place the detector screen over the detector, and fit the plastic case on the back of the instrument. Turn the instrument over and tighten the four Phillips head screws. Install the batteries, and replace the battery cover. Note that with the DIP Switch 2 in the ON position, Setup mode may be entered and parameters viewed, but changes cannot be made.

DISPLAY BACKLIGHT 'Continuous On': The Model 26-3 display backlight can be set to remain on continuously during operation. Follow the steps above for **SETUP PROTECT**, but use DIP Switch 1 for display backlight selection. Setting DIP Switch 1 to the ON (right) position will configure the display backlight to remain on during operation. Set DIP Switch 1 to the OFF (left) position, and the display will be backlit only when light levels are low.

NOTE: Setting the display backlight for continuous-on operation can result in reduced battery life.

Setup Mode Operation

Once the Model 26-3 is in Setup mode, the Calibration Constant will be displayed on the LCD, and the hundredths digit will be blinking, indicating it as the selected item. Use the MODE button to adjust the value for the selected item. When the appropriate value is selected for that item, press the ON/ACK button to move to the next item. When the desired value is displayed, either wait for four seconds for the Model 26-3 to switch to the next parameter, or press the UNITS button to advance to the next parameter. *When the Model 26-3 is in PROTECT mode (dipswitch setting), the Setup parameters will cycle through to display the set values, but changes are not possible.*

The order of Setup parameters for the Model 26-3 is as follows:

Calibration Constant (Default 3.30 kcpm per mR/h) - Use ON/ACK to select the value to adjust, and MODE to adjust the value. Value is in kcpm per mR. Available values are:

Ones Place (0-9)

Tens Place (0-9)

Hundreds Place (1-9)

Dead Time Correction (Default 75 microseconds) - Use ON/ACK to select the value to adjust, and MODE to adjust the value. Value is in microseconds. Available values are:

Ones Place (0-9)

Tens Place (0-9)

Hundreds Place (0-9)

Efficiency (Default 15.0%) - Use ON/ACK to select the value to adjust, and MODE to adjust the value. Available values are:

Ones Place (0-9)

Tens Place (0-9)

Hundreds Place (0-9)

Number of Decimal Places (0 or 1)

Normally the efficiency is used on a per detector basis, i.e. the efficiency of the detector is calculated by dividing the count rate received from a source by the total disintegration rate of the source. But if the user desires to have the Model 26-3 show results in terms of dpm/100 cm², the user could manipulate the efficiency to produce this result : efficiency = count rate/disintegration rate/6.7. The factor of 6.7 is the ratio of 100 cm² to 15 cm², which is the size of the pancake detector. If we start with the default value of 15% to measure in dpm, then the parameter could be changed to 2.2% to measure in dpm/100 cm².

Or likewise for Bq/cm², efficiency could be calculated as: efficiency = countrate/disintegration rate*15. Again, the factor of 15 is because the area of the pancake detector is 15 cm². If we start with the default value of 15% to measure in Bq, then the parameter could be changed to 225% to measure in Bq/cm².

Primary Units (Default cpm) - Use MODE to select. Available values are cps, cpm, Bq, dpm, mR/h, and μSv/h.

Primary Units RATE/MAX Mode Alarm Point (Default 000) - Use ON/ACK to select the value to adjust, and MODE to adjust the value. Units will be the same as selected earlier with Primary Units. The ALARM LCD Segment will be on to indicate an Alarm parameter. Set this Alarm Point to 000 to disable. Available values are:

Ones Place (0-9)

Tens Place (0-9)

Hundreds Place (0-9)

Thousands Place (1 on or off)

Number of Decimal Places (0, 1, or 2— only available if **k** selected)

Range (**k** on or off – not available for mR/h or μSv/h)

Note: If the Primary Units has changed to a value other than that used to previously set this Alarm Point, the Alarm Point will be reset to 000.

Primary Count Units (Default c) - Use MODE to select. Available values are dependent on the selected Primary Units:

Primary Units	Primary Count Units Available	Primary Units	Primary Count Units Available
cps	cps c	dpm	dpm d
cpm	cpm c	mR/h	mR/h mR
Bq	Bq d	μ Sv/h	μ Sv/h μ Sv

Primary Count Alarm Point (Default 000) - Use ON/ACK to select the value to adjust, and MODE to adjust the value. Units will be the same as selected earlier with Primary Count Units. Primary Count Units of c or d will not be displayed, but mR or μ Sv will. The ALARM LCD Segment will be on to indicate an Alarm parameter. Set this Alarm Point to 000 to disable. Available values are:

Ones Place (0-9)

Tens Place (0-9)

Hundreds Place (0-9)

Thousands Place (1 on or off)

Number of Decimal Places (0, 1, or 2— only available if **k** selected)

Range (**k** on or off – not available for mR or μ Sv)

Note: If the Primary Count Units has changed to a value other than that used to previously set this Alarm Point, the Alarm Point will be reset to 000.

Secondary Units (Default mR/h) - Use MODE to select. Available values are cps, cpm, Bq, dpm, mR/h, μ Sv/h, and off (no units displayed), excluding the units selected as Primary Units.

Secondary Units RATE/MAX Mode Alarm Point (Default 000) - Use ON/ACK to select the value to adjust, and MODE to adjust the value. If the Secondary Units is off, this parameter will be skipped. Otherwise, units will be the same as selected earlier with Secondary Units. The ALARM LCD Segment will be on to indicate an Alarm parameter. Set this Alarm Point to 000 to disable. Available values are:

Ones Place (0-9)

Tens Place (0-9)

Hundreds Place (0-9)

Thousands Place (1 on or off)

Number of Decimal Places (0, 1, or 2— only available if **k** selected)

Range (**k** on or off – not available for mR/h or μ Sv/h)

Note: If the Secondary Units has changed to a value other than that used to previously set this Alarm Point, the Alarm Point will be reset to 000.

Secondary Count Units (Default mR) - Use MODE to select. If the Secondary Units is off, this parameter will be skipped. Otherwise, the available values are dependent on the selected Secondary Units:

Secondary Units	Secondary Count Units Available	Secondary Units	Secondary Count Units Available
cps	cps c off	dpm	dpm d off
cpm	cpm c off	mR/h	mR/h mR off
Bq	Bq d off	μ Sv/h	μ Sv/h μ Sv off

Secondary Count Alarm Point (Default 000) - Use ON/ACK to select the value to adjust, and MODE to adjust the value. If the Secondary Units is off, this parameter will be skipped. Otherwise, units will be the same as selected earlier with Secondary Count Units. Secondary Count Units of c or d will not be displayed, but mR or μSv will. The ALARM LCD Segment will be on to indicate an Alarm parameter. Set this Alarm Point to 000 to disable. Available values are:

Ones Place (0-9)

Tens Place (0-9)

Hundreds Place (0-9)

Thousands Place (1 on or off)

Number of Decimal Places (0, 1, or 2— only available if **k** selected)

Range (**k** on or off – not available for mR or μSv)

Note: If the Secondary Count Units has changed to a value other than that used to previously set this Alarm Point, the Alarm Point will be reset to 000.

Response Time (Default 0=auto) – Use ON/ACK to select the value to be adjusted and MODE to adjust the value. Setting the Response Time to a fixed value is useful primarily when performing surveys to a fixed MDA (Minimum Detectable Activity) level. Setting the Response Time to 0 will enable the Auto-Response mode for the Model 26-3 (see the next parameter). Available values for the Response Time (in seconds) are:

Ones Place (0-9)

Tens Place (0-6, 6 forces max Response Time of 60)

Auto-Response Rate (Default F) - Use MODE to select Fast (**F**) or Slow (**S**).

When operating in Auto-Response mode, the Model 26-3 will vary the Response Time based on the Auto-Response Rate selected (**F**ast or **S**low) and the current Count Rate. The following table shows the response time for different count rates when these auto response modes are chosen:

Count Rate	Auto Response Time – Fast (Seconds)	Auto Response Time – Slow (Seconds)
Less than 3 kcpm (50 cps)	5	10
Between 3 kcpm and 4 kcpm (67 cps)	4	8
Between 4 kcpm and 6 kcpm (100 cps)	3	6
Between 6 kcpm and 12 kcpm (200 cps)	2	4
More than 12 kcpm	1	2

The Model 26-3 also utilizes a Step function in Auto Response mode, which enables faster response to a significant increase or decrease in Count Rate. When the instrument detects a sudden change in count rate from the detector, the response time is reduced to 1 second to quickly show the new value.

Operational Modes (Default 0=all modes available) - Use MODE to adjust the value. Available values are:

- 0 – RATE, MAX, and COUNT Modes
- 1 – RATE and MAX Modes only
- 2 – RATE and COUNT Modes only
- 3 – RATE Mode only

Count Time (Default 1 minute) - Use ON/ACK to select the value to adjust, and MODE to adjust the value. Setting Count Time to 0 enables continuous count until reset. If 19 minutes are selected, then the maximum seconds value is 60; otherwise, the maximum seconds value is 59. Available values are:

- Ones Place (**0-9**)
- Tens Place (**0-6**, **6** only available if minutes value is 19)
- Hundreds Place (**0-9**)
- Thousands Place (**1** on or off)

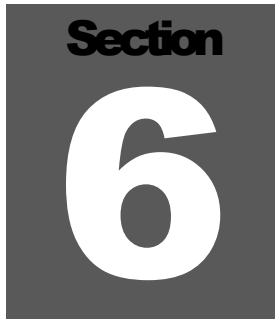
Low Light Threshold (Default 55) - Use ON/ACK to select the value to adjust, and MODE to adjust the value. Available values are:

Ones Place **(0-9)**

Tens Place **(0-9)**

Hundreds Place **(0-9)**

NOTE: If no buttons are pressed for four seconds, the Model 26-3 will switch to the next parameter, and if on the last parameter, will save the parameters and exit Setup mode, returning to RATE mode operation. The UNITS button can be used to advance to the next parameter. To end Setup mode and save the current setting, press and hold the UNITS button for approximately 5 seconds.

A dark gray square containing the word "Section" in a bold, white, sans-serif font at the top, and a large, white, bold number "6" in the center.

Safety Considerations

Environmental Conditions for Normal Use

Indoor or outdoor use (While rain resistant, user is cautioned to avoid getting water through detector opening.)

Temperature range of -40 to 65 °C (-40 to 150 °F)

Maximum relative humidity of less than 95% (non-condensing)

Pollution Degree 3 (as defined by IEC 664): (Occurs when conductive pollution or dry nonconductive pollution becomes conductive due to condensation. This is typical of industrial or construction sites.)

Not certified for use in an explosive atmosphere

Warning Markings and Symbols

Caution!

The operator or responsible body is cautioned that the protection provided by the equipment may be impaired if the equipment is used in a manner not specified by Ludlum Measurements, Inc.

Caution!

The GM tube face can rupture above 8000 feet in altitude. When transporting this detector by air, use an airtight container in order to avoid sudden atmospheric changes resulting in tube failure.

The Model 26-3 Frisker is marked with the following symbols:



CAUTION (per ISO 3864, No. B.3.1): designates hazardous live voltage and risk of electric shock. During normal use, internal components are hazardous live. This instrument must be isolated or disconnected from the hazardous live voltage before accessing the internal components. This symbol appears on the side panel. Be sure to take the precautions noted in the next section whenever necessary.



The “**crossed-out wheeled bin**” symbol notifies the consumer that the product is not to be mixed with unsorted municipal waste when discarding. Each material must be separated. The symbol is placed on the label located on the side panel. See section 7, “Recycling,” for further information.

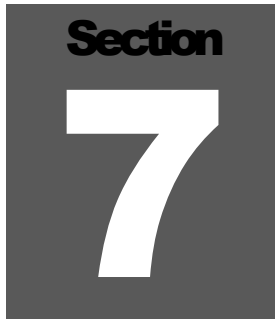


The “CE” mark is used to identify this instrument as being acceptable for use within the European Union.

Cleaning and Maintenance Precautions

The Model 26-3 may be cleaned externally with a damp cloth, using only water as the wetting agent. Observe the following precautions when cleaning or performing maintenance on the instrument:

1. Turn the instrument OFF and remove the batteries.
2. Allow the instrument to sit for one minute before cleaning the exterior or accessing any internal components for maintenance.

A dark gray square containing the word "Section" in a bold, black, sans-serif font at the top, and a large, white, bold number "7" in the center.

Revision History

NOTE: *This section of the manual will be updated with each revision of the Model 26-3 in order to document changes over time. Ludlum Measurements' policy is to provide free software upgrades to instruments for the life of the instrument.*

May 2024: In Section 3 Specifications, changed ^{99}Tc efficiency to 14% from 18%.

November 2023: Replaced drawing in the front of the manual with Drawing 519 x 50.

July 2022: In Section 6 Safety Considerations, deleted "No maximum altitude" under Environmental Conditions for Normal Use and added a second Caution note under Warning Markings and Symbols about the GM tube face rupturing above 8000 feet.

December 2019: Added paragraph to end of Section 1 and Drawing 517 x 172A for info about HV test plug.

September 2018: Removed references to exposure filter.

December 2016: Added Linearity to Specifications, Section 3.

October 2016: Added Low Light Threshold to page 5-10.

August 2016: New manual.

Section

8

Recycling

Ludlum Measurements, Inc. supports the recycling of the electronics products it produces for the purpose of protecting the environment and to comply with all regional, national, and international agencies that promote economically and environmentally sustainable recycling systems. To this end, Ludlum Measurements, Inc. strives to supply the consumer of its goods with information regarding reuse and recycling of the many different types of materials used in its products. With many different agencies – public and private – involved in this pursuit, it becomes evident that a myriad of methods can be used in the process of recycling. Therefore, Ludlum Measurements, Inc. does not suggest one particular method over another, but simply desires to inform its consumers of the range of recyclable materials present in its products, so that the user will have flexibility in following all local and federal laws.

The following types of recyclable materials are present in Ludlum Measurements, Inc. electronics products, and should be recycled separately. The list is not all-inclusive, nor does it suggest that all materials are present in each piece of equipment:

Batteries	Glass	Aluminum and Stainless Steel
Circuit Boards	Plastics	Liquid Crystal Display (LCD)

Ludlum Measurements, Inc. products that have been placed on the market after August 13, 2005, have been labeled with a symbol recognized internationally as the “crossed-out wheelie bin,” which notifies the consumer that the product is not to be mixed with unsorted municipal waste when discarding. Each material must be separated. On the Model 26-3, the symbol will be placed on the serial number label located on the side of the instrument.

The symbol appears as such:



Section**9****Maintenance and Spare Parts**

Maintenance

For external cleaning of the instrument, scrub with a dampened, soapy cloth. This is the only regular maintenance required.

Spare Parts

Following is a list of spare parts for a Model 26-3:

Description	Part #
AA Batteries	14-5417
GM Pancake Tube	01-5008
Detector Screen	7002-1054
Battery Cover Hook	7498-319