

Lumic Configuration 2 Software Manual

Ludlum Measurements

August 2022

2.6.0.0 and above

Lumic Configuration 2 Software Manual

Ludlum Measurements

August 2022

2.6.0.0 and above



LUDLUM MEASUREMENTS, INC
501 OAK STREET, P.O. BOX 810
SWEETWATER, TEXAS 79556
325-235-5494, FAX: 325-235-4672

CONTENTS

Contents	1
1 Getting Started	7
2 Login	9
2.1 How To's	9
2.2 Screen Descriptions	11
2.2.1 Login Window	11
2.2.2 Change Login Window	12
2.3 How to transfer custom Rules/Settings to different computers	13
3 Main Instrument Screen	15
3.1 Top Menu	15
3.2 Device Menu	16
3.3 Device Setting Window	17
3.4 Parameters Display	19
4 List Wizard	23
4.1 Regular and Print Blacklists	26
4.2 Regular and Print Blacklists Comparer	28
4.3 Regular and Print Blacklists With Parameters	29
4.4 Regular and Print Conditional Blacklists	30
4.5 Regular and Print Conditional Blacklists Comparer	32
4.6 Regular and Print Conditional Blacklists With Parameters	33
4.7 Read Only List	34
4.8 Read Only List Comparer	36
4.9 Read Only List With Parameters	37
4.10 Regular and Print Priority Lists	38
4.11 Regular and Print Priority Lists Comparer	40
4.12 Regular and Print Priority Lists With Parameters	41
4.13 Dose, Rate, and Count Min/Max Ranges	42
4.14 Dose, Rate, and Count Min/Max Ranges Comparer	45
4.15 PID List	46
4.16 PID List Comparer	48
5 Possible Wizards	49
5.1 Possible Buttons and Wizards	49
5.2 Dose Min Wizard	51
5.3 Rate Min Max Wizard	52
5.4 Rate Min Max Wizard (Zero Min Value Only)	53
5.5 Count Min Wizard	54
5.6 Count Min Wizard (Zero Min Value Only)	55
5.7 Unit Min Max Wizard	56

6	Trouble Shooting	59
6.1	Missing .Net Framework	59
6.2	No devices showing up	59
6.3	Calibration on different devices – first plug in	60
7	Revision History	61

SOFTWARE LICENSE AGREEMENT

BY INSTALLING THIS SOFTWARE, YOU ARE CONSENTING TO BE BOUND BY THIS AGREEMENT. IF YOU DO NOT AGREE TO ALL OF THE TERMS OF THIS AGREEMENT, DO NOT INSTALL THE PRODUCT.

Single User License Grant: Ludlum Measurements, Inc. ("Ludlum") and its suppliers grant to Customer ("Customer") a nonexclusive and nontransferable license to use the Ludlum software ("Software") in object code form solely on a single central processing unit owned or leased by Customer or otherwise embedded in equipment provided by Ludlum.

Customer may make one (1) archival copy of the Software provided Customer affixes to such copy all copyright, confidentiality, and proprietary notices that appear on the original.

EXCEPT AS EXPRESSLY AUTHORIZED ABOVE, CUSTOMER SHALL NOT: COPY, IN WHOLE OR IN PART, SOFTWARE OR DOCUMENTATION; MODIFY THE SOFTWARE; REVERSE COMPILE OR REVERSE ASSEMBLE ALL OR ANY PORTION OF THE SOFTWARE; OR RENT, LEASE, DISTRIBUTE, SELL, OR CREATE DERIVATIVE WORKS OF THE SOFTWARE.

Customer agrees that aspects of the licensed materials, including the specific design and structure of individual programs, constitute trade secrets and/or copyrighted material of Ludlum. Customer agrees not to disclose, provide, or otherwise make available such trade secrets or copyrighted material in any form to any third party without the prior written consent of Ludlum. Customer agrees to implement reasonable security measures to protect such trade secrets and copyrighted material. Title to Software and documentation shall remain solely with Ludlum.

LIMITED WARRANTY. Ludlum warrants that for a period of ninety (90) days from the date of shipment from Ludlum: (i) the media on which the Software is furnished will be free of defects in materials and workmanship under normal use; and (ii) the Software substantially conforms to its published specifications. Except for the foregoing, the Software is provided AS IS. This limited warranty extends only to Customer as the original licensee. Customer's exclusive remedy and the entire liability of Ludlum and its suppliers under this limited warranty will be, at Ludlum or its service center's option, repair, replacement, or refund of the Software if reported (or, upon request, returned) to the party supplying the Software to Customer. In no event does Ludlum warrant that the Software is error free or that Customer will be able to operate the Software without problems or interruptions.

This warranty does not apply if the software (a) has been altered, except by Ludlum, (b) has not been installed, operated, repaired, or maintained in accordance with instructions supplied by Ludlum, (c) has been subjected to abnormal physical or electrical stress, misuse, negligence, or accident, or (d) is used in ultra hazardous activities.

DISCLAIMER. EXCEPT AS SPECIFIED IN THIS WARRANTY, ALL EXPRESS OR IMPLIED CONDITIONS, REPRESENTATIONS, AND WARRANTIES INCLUDING, WITHOUT LIMITATION, ANY IMPLIED WARRANTY OF MERCHANTABILITY, FITNESS FOR A PARTICULAR PURPOSE, NONINFRINGEMENT OR ARISING FROM A COURSE OF DEALING, USAGE, OR TRADE PRACTICE, ARE HEREBY EXCLUDED TO THE EXTENT ALLOWED BY APPLICABLE LAW. IN NO EVENT WILL LUDLUM OR ITS SUPPLIERS BE LIABLE FOR ANY LOST REVENUE, PROFIT, OR DATA, OR FOR SPECIAL, INDIRECT, CONSEQUENTIAL, INCIDENTAL, OR PUNITIVE DAMAGES HOWEVER CAUSED AND REGARDLESS OF THE THEORY OF LIABILITY ARISING OUT OF THE USE OF OR INABILITY TO USE THE SOFTWARE EVEN IF LUDLUM OR ITS SUPPLIERS HAVE BEEN ADVISED OF THE POSSIBILITY OF SUCH.

DAMAGES. In no event shall Ludlum's or its suppliers' liability to Customer, whether in contract, tort (including negligence), or otherwise, exceed the price paid by Customer. The foregoing limitations shall apply even if the above-stated warranty fails of its essential purpose. **SOME STATES DO NOT ALLOW LIMITATION OR EXCLUSION OF LIABILITY FOR CONSEQUENTIAL OR INCIDENTAL DAMAGES.**

The above warranty DOES NOT apply to any beta software, any software made available for testing or demonstration purposes, any temporary software modules or any software for which Ludlum does not receive a license fee. All such software products are provided AS IS without any warranty whatsoever.

This License is effective until terminated. Customer may terminate this License at any time by destroying all copies of Software including any documentation. This License will terminate immediately without notice from Ludlum if Customer fails to comply with any provision of this License. Upon termination, Customer must destroy all copies of Software.

Software, including technical data, is subject to U.S. export control laws, including the U.S. Export Administration Act and its associated regulations, and may be subject to export or import regulations in other countries. Customer agrees to comply strictly with all such regulations and acknowledges that it has the responsibility to obtain licenses to export, re-export, or import Software.

This License shall be governed by and construed in accordance with the laws of the State of Texas, United States of America, as if performed wholly within the state and without giving effect to the principles of conflict of law. If any portion hereof is found to be void or unenforceable, the remaining provisions of this License shall remain in full force and effect. This License constitutes the entire License between the parties with respect to the use of the Software.

Restricted Rights - Ludlum's software is provided to non-DOD agencies with RESTRICTED RIGHTS and its supporting documentation is provided with LIMITED RIGHTS. Use, duplication, or disclosure by the Government is subject to the restrictions as set forth in subparagraph "C" of the Commercial Computer Software - Restricted Rights clause at FAR 52.227-19. In the event the sale is to a DOD agency, the government's rights in software, supporting documentation, and technical data are governed by the restrictions in the Technical Data Commercial Items clause at DFARS 252.227-7015 and DFARS 227.7202. Manufacturer is Ludlum Measurements, Inc. 501 Oak Street Sweetwater, Texas 79556.

GETTING STARTED

General Description

Lumic 2 allows the user to connect to certain devices, (currently the Ludlum Models: 3000, 3001, 3002, 3003(i), 3004(i), 3005, 3006, 3007(B/i), 3014, 3019, 3276, and 3078(i) - more to be added later) customize, and calibrate said devices.

The software itself can be customized to a degree by the removal of parameters in either the main view or the printed parameters (conditionally as well). The software can also be customized by modifying or adding display ranges for Count, Dose, and Rate modes per detector.

The full Calibration version of this software has the following extra Wizards:

- Plateau Wizard - to help with the calibration of the high voltage
- Detector Calibration Wizard - to help determine the Calibration Constant, Dead Time, and Dead Time Second Order parameters
- Chi Squared Wizard - to check the consistency of the Counts of a Detector.

This software is fully compatible with these Ludlum Models:

- 3000
- 3001
- 3002
- 3003(i)
- 3004(i)
- 3005
- 3006
- 3007(B/i)

- 3014
- 3019
- 3276
- 3078(i)
- 30(-4)(-7(B))
- 35
- 79

Minimum Requirements

- **Supported Operating Systems:** Windows 7 and higher (32-bit and 64-bit versions).
- Computer with Intel or compatible 1 GHz or faster processor (2 GHz or faster is recommended).
- Minimum of 256 MB of RAM (1 GB or more is recommended).
- 60 MB of free hard disk space
- .Net Frameworks 4.5 or greater

How to Run the Program

1. Turn on the Device.
2. Run Lumeric 2 Software
3. Log in. The default user name is "Admin", and the default password is "password".
4. Plug the device into the computer via USB cable.
5. Click Connect to Instrument and wait for the parameters to load.

LOGIN

2.1 How To's

How to Log in

1. Fill in an appropriate user name and password. The default user name is "Admin", and the default password is "password".
2. Click the **Ok** button.

How to add a new Log in with default settings

1. Click the **Change Login** button.
2. Fill in an appropriate user name and password in the Current User Name and Current Password fields.
3. Fill in the new user name and password in the Updated User Name and Updated Password fields.
4. Ensure that the **Copy over Rules/Settings** checkbox is **not** checked.
5. Click the **Add** button.

How to add a new Log in with the settings from another Log in

1. Click the **Change Login** button.
2. Fill in the user name and password in the Current User Name and Current Password fields that you want to copy the settings from.
3. Fill in the new user name and password in the Updated User Name and Updated Password fields.
4. Ensure that the **Copy over Rules/Settings** checkbox is checked.
5. Click the **Add** button.

How to change the password for a Log in

1. Click the **Change Login** button.
2. Fill in the user name and password in the Current User Name and Current Password fields that you want to change the password for.
3. Fill in the same user name in the Updated User Name field.
4. Fill in the new password in the Updated Password field.
5. Click the **Update** button.

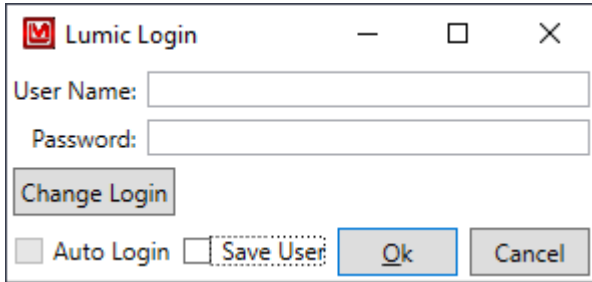
How to replace a Log in

1. Click the **Change Login** button.
2. Fill in the user name and password in the Current User Name and Current Password fields that you want to replace.
3. Fill in the new user name and password in the Updated User Name and Updated Password fields.
4. Click the **Update** button.

2.2 Screen Descriptions

2.2.1 Login Window

This is the password screen that allows the user into the Lumic 2 Software.



User Name

This is the user name to log in with. The default User Name is "Admin".

Password

This is the password to log in with. The default Password is "password".

Change Login

This allows the user to change the login user name and/or password. If "Auto Login" was previously selected it must be disabled in order to "Change Login". See section 3.1 .

Auto Login

Checking this will allow the user to skip logging in in the future. This will only be enabled after checking, "Save User." Checking this will prevent the login screen from being displayed after the first successful login. See section 3.1 .

Save User

Checking this will save the last used user name and fill it in the next time the user starts the Lumic software.

OK

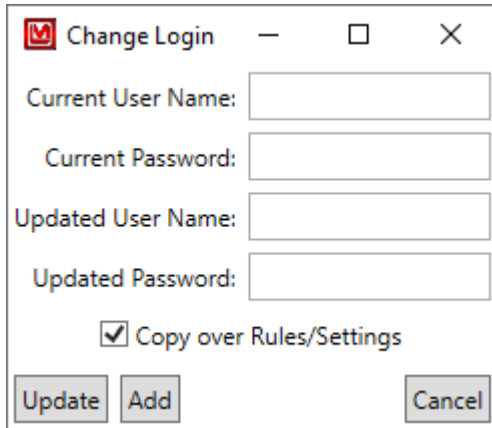
Clicking this will check the user name and password and either (if the user name and password is correct) close this window and open the Lumic 2 Software, or show a pop-up window indicating the error.

Cancel

This command closes this window and the software.

2.2.2 Change Login Window

This allows the user to change the user name and password to log in with.



Current User Name

This is a current user name. If you will be updating the Login, this is the user name that will be replaced.

Current Password

This is the password of the current user name.

Updated User Name

This is the new user name. If you will be updating the Login, this can be the same value as the "Current User Name" if only the password should be changed.

Updated Password

This is the new password. If you will be updating the Login, this can be the same value as the "Current Password" if only the user name should be changed.

Copy Over Rules/Settings

Checking this will copy over any modified Rules/Settings from the current user name to the new User Name. Please note that, in the event of updating an existing user name, is always done regardless of the state of this check box.

Update

Clicking this will either update the user name and password (if everything was correct) or show a pop-up window that indicates what was incorrect.

Add

Clicking this will either add a new user name and password (if everything was correct) or show a pop-up window that indicates what was incorrect.

Cancel

Clicking this closes the window without updating the user name and password.

2.3 How to transfer custom Rules/Settings to different computers

In the event that you want to transfer the custom Rules/Settings to a different computer (such as ensuring everyone has the same custom rules), you will have to copy the files over manually.

The Folder to look for is in `C:\ProgramData\Ludlum Measurements, Inc\Lumic_2_0`. Please note that `ProgramData` is typically hidden by default by Windows, thus you will need to ensure that "Show hidden files, folders, and drives" is selected to be able to see it.

In this folder should be a Folder with the name of the Lumic User you wish to copy. If there is no folder by that name, then there has never been custom Rules/Settings for that Lumic User, though an empty folder may exist if custom Rules/Settings had once been made, and then removed.

Simply copy this folder over to the new computer in the same location
`C:\ProgramData\Ludlum Measurements, Inc\Lumic_2_0`.

Please note that just making this folder on a new computer will not create a new Lumic User for that computer. You will still need to create that User (see "How to add a new Log in with default settings" in Section 2.1).

How to show hidden Folders in Windows

1. Open the Windows File Explorer.
2. In the View Menu, select the Options button/icon.
3. In the Folder Options window, go to the View tab.
4. In the Advanced settings group, select the option **Show hidden files, folders, and drives**.
5. Click **Ok**.

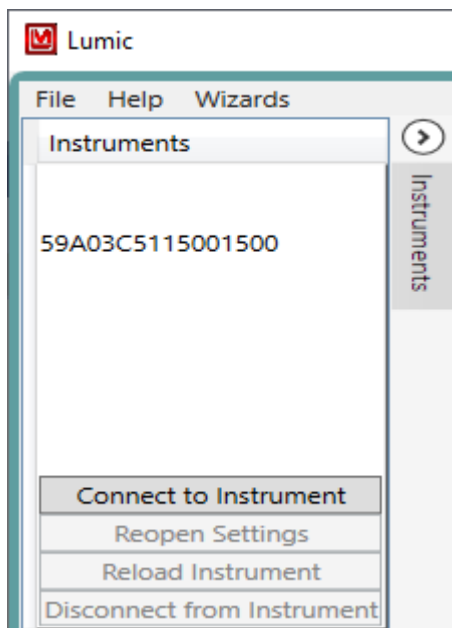
How to transfer custom Rules/Settings to a different computer

1. Open the Windows File Explorer.
2. Go to C: drive.
3. Open the ProgramData folder.

4. Open the Ludlum Measurements, Inc folder.
5. Open the Lumic_2_0 folder.
6. Copy the folder with the Lumic User name you wish to copy to a flash drive (or how ever you will transfer the settings).
7. Go the other computer.
8. Repeat steps 1 - 5.
9. Paste the folder into the Lumic_2_0 folder.
10. If needed, create the new Lumic User via "How to add a new Log in with default settings" in Section 2.1.

MAIN INSTRUMENT SCREEN

3.1 Top Menu



File Menu

Disable Auto Login

This will disable the automatic login, if you need to change any login information but can't due to the LogIn screen being skipped via the Auto Login setting.

Exit

This will close the program.

Help Menu

Change Log

This will display the current Change Log of the software, which is a history of any changes done to the software. Any bolded List items indicate that said list was updated for that version, and thus if you have made any changes to said list, please use the appropriate List Wizard to check or merge the updates into your custom list.

Manual

Opens a copy of the manual installed with the software.

About

Shows the current version of the software.

Wizards Menu

List Wizards

This will open up the List Wizards for customizing the software. A device does not need to be plugged in to use this feature. (See Section 4 for more information).

3.2 Device Menu

Connect to the Instrument

Clicking this will connect to the device, load all parameters, and open the device's Settings tab.

Reopen Settings

Clicking this will open the Settings Tab if closed accidentally.

Note: This does not re-poll the instrument for current saved values. Any changes made but not saved will be pulled backed in with the unsaved visual indications.

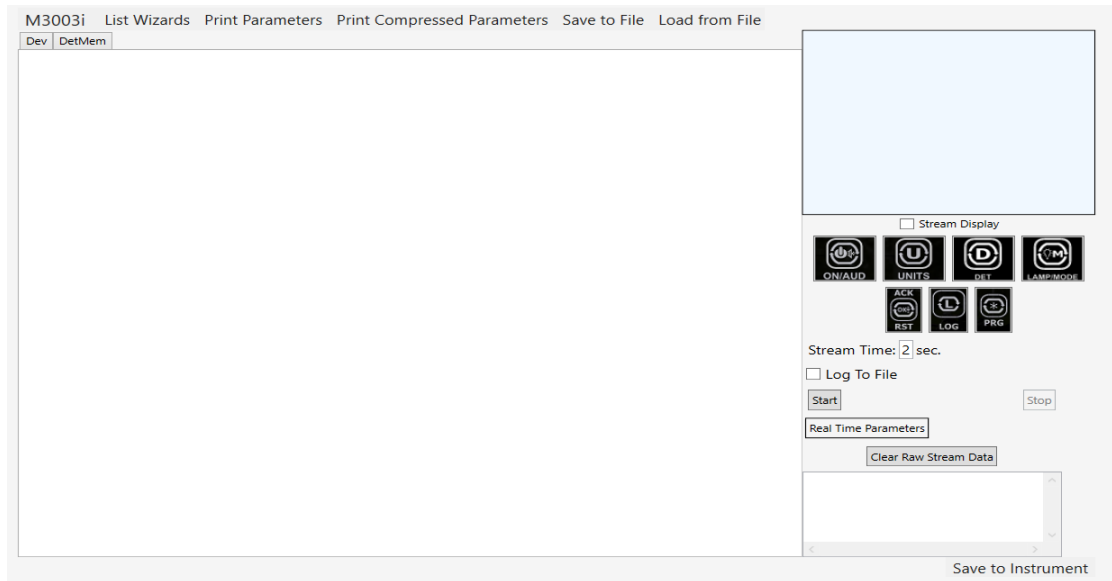
Reload Instrument

Clicking this will reload all parameters, closing the old Settings tab and opening a new Settings tab.

Disconnect from Instrument

Clicking this will close the Settings tab and disconnect the device from the software. This is not required to be done unless connecting to different Lumic Software without closing Lumic 2.

3.3 Device Setting Window



Device Parameters Tab

This is the screen that shows the programmatically generated display built from the device's parameters in combination with the Blacklist (Section 4.1), Conditional Blacklist (Section 4.4), Read Only List (Section 4.7), and potentially sorted with the Regular Priority List (Section 4.10).

Top Menu

List Wizards

Selecting this will open a special version of the List Wizard that displays the wire names of the current Instrument (See Section 4 for more information).

Print Parameters

Selecting this will print the parameters each major group (i.e. "Dev" or "Det Mem") will print on a separate page. This is also programmatically generated with the use of the Print Blacklist (Section 4.1), Print Conditional Blacklist (Section 4.4), and Print Priority List (Section 4.10).

Print Compressed Parameters

Selecting this will print the parameters in a compressed form (multiple major groups per page). This is also programmatically generated with the use of the Print Blacklist (Section 4.1), Print Conditional Blacklist (Section 4.4), and Print Priority List (Section 4.10).

Save to File

This saves the parameters to a file (either as an XML or Comma Separated Value file).

Load from File

This loads the parameters from a file (either as an XML or Comma Separated Value file).

Remote Display

This is either a general replication of the main display screen of the device along with its buttons, or a generic fallback that should work well enough for what is needed. In order for the remote display to update, the “Stream Display Checkbox” must be selected and the “Real-Time Stream Start” button clicked.

Display

This is either a general replication of the main display screen of the device or a generic fallback version.

Stream Display

Checking this box will allow the streaming of the display data. This counts as a single parameter.

Buttons

This is a generic recreation of the buttons on the device (split into different options of press length, typically ordered from the shortest to the longest.) Right-clicking each button will open a menu that allows the user to send a certain length of button press, if such press is desired. Left-clicking will generate a short press on the device.

Real-Time Stream

This starts and stops the real-time streaming of parameters. For now, only up to seven parameters can be streamed at one time.

Stream Time

This is the amount of seconds between each record sent from the device while streaming.

Log to File

Checking this box will allow the user to also save the real-time stream as a Comma Separated Value file.

Start Button

Clicking this button will start the real-time streaming if any parameters are selected to be streamed. Selecting the start button will automatically clear the “Raw Stream Data” if present.

Stop Button

Clicking this will end the real-time streaming.

Real-Time Parameters

This is a list of any real-time parameters being streamed.

Clear Raw Stream Data Button

Clicking this will clear the raw stream data.

Raw Stream Data

This is the raw stream of data. The value of each parameter selected will be streamed at the selected stream time. Each value will be separated by a comma and will be in the order in which they were selected. A time stamp is added at the beginning of each streamed record.

Bottom Menu

Save to Instrument

This saves any changed, valid values to the device.

3.4 Parameters Display

This is a description of how the display of the parameters is generated. It is an organized display of the wire names. It is recommended to use the Wizards when possible, as this display does not understand any semantic or logical connections, such as “Min” and “Max” values, but only the accepted ranges provided by the device.

Conversion from Wire Names

The display is built automatically from the device’s parameters (typically referred to as “Wire Names” when in their raw format). These are broken apart and then grouped together based on each part.

To further explain, following is an example list of Wire Names:

```
Base_Tab[0]_Group1_Field1
Base_Tab[0]_Group1_Field2
Base_Tab[0]_Group2_Field3
Base_Tab[0]_Group2_Field4
Base_Tab[1]_Group1_Field1
Base_Tab[1]_Group1_Field2
Base_Tab[1]_Group2_Field3
Base_Tab[1]_Group2_Field4
OtherBase_Group3_Field5
```

OtherBase_Group3_Field6
 OtherBase_BrokenUpName

Will be converted to:

- Base (tab)
 - Tab 1 (tab)
 - * Group 1 (group)
 - Field 1(field)
 - Field 2 (field)
 - * Group 2 (group)
 - Field 3(field)
 - Field 4 (field)
 - Tab 2 (tab)
 - * Group 1 (group)
 - Field 1(field)
 - Field 2 (field)
 - * Group 2 (group)
 - Field 3(field)
 - Field 4 (field)
- Other Base (tab)
 - Broken Up Name (field)
 - Group 3 (tab)
 - * Field 5(field)
 - * Field 6 (field)

Each Wire Name is broken down based on underscores and added to a nested list of each chunk. Each leaf is the bottom list of each chunk. Then each chunk is checked for ending with a number surrounded by square brackets and is thus set as a tab – all chunks that are in the base list are set to tabs by default. Finally, all chunks' names are cleaned up to appear more readable, such as breaking up what seems to be Camel Case names (CamelCaseField → Camel Case Field), turning any numeric tab names into readable numbers ([0] → 1), etc.

When actually displayed, each collection of chunks is displayed in this order: Fields, Tabs, and Groups.

Tabs

Tabs tend to be either numeric portions of a parameter (such as Unit 1, Unit 2, etc.) or the base portion of parameters (typically Dev or DetMem for most devices). Note that this does not include any parameter that just happens to contain a number (such as DTC2).

Groups

Groups are portions of parameters that are shared by two or more parameters that aren't otherwise grouped into tabs.

Fields

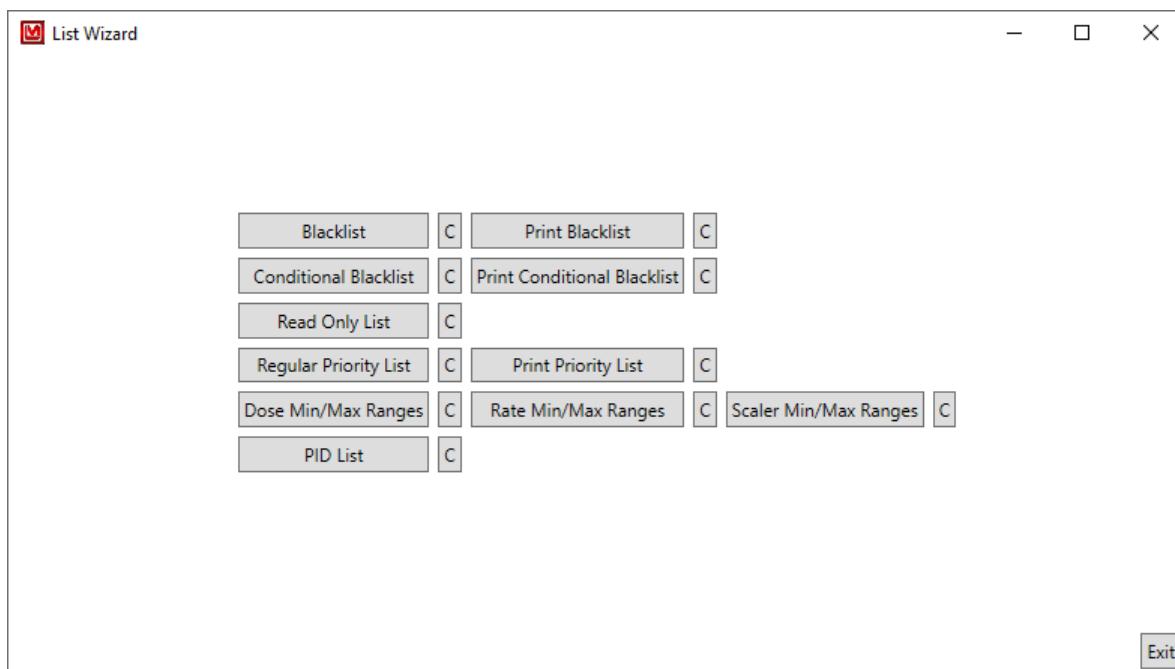
Fields are the final part, representing the parameter itself. Each field can be one of several types, based on its Meta Data information. All fields have a check box that will add it to the list of real-time streaming values. As well as a red "X" that only appears when saving a value to the device, the device reports some error not otherwise caught by the software.

Types of Fields

- **Text Field** - A general text field, which has a minimum and maximum number of characters that can be input.
- **Selection Field** - A drop-down box with all allowed values for the field.
- **Whole Number Field** - A field that only accepts whole numbers (0, 1, 2, etc.).
- **Real Number Field** - A field that only accepts real numbers (0, 0.3, 1, 1.5, 2.7, 2.1e-5, etc.).
- **Checkbox Field** - A simple check box field, which typically is enabling or disabling the setting the parameter represents.
- **Multiple Choice Field** - A collection of check boxes that represent a value that can be made up of one or more parts.
- **SI Prefix Field** - A field that consists of a real number and an SI Prefix (m, k, etc.).
- **SI Prefix Field (3 digits only)** - A field that consists of a real number (with the restriction of only allowing up to 3 significant digits) and an SI Prefix (m, k, etc.). If less than three digits are entered, the missing digits will be post appended as decimal points.
- **Invalid Field** - This would indicate that the Meta data could not be parsed correctly or was not recognized. The best case scenario is that you might be using an older version of the software that does not know about a new field type. This field can still be used, but you should be careful in how you change the value. This will be displayed with an orange background.
- **Unknown Field** - This would indicate that the Meta Data was never read in the first place. This should only show up in older devices. Otherwise, a communication error occurred and the instrument should be reloaded. This will be displayed with an orange background.

LIST WIZARD

The List Wizard provides a way to edit lists that allow the user to customize the main window. See the following figure and definitions of all the buttons shown. Please note that once a list is edited, it may be necessary to “Reload the instrument” in order to see the changes.



C Button

All buttons marked “C” will open a Comparison Window that allows you to compare your current version of the list with the factory default list, if there are any changes to compare.

Blacklist Button

Clicking this will open the Blacklist editing screen. Parameters on the Blacklist will NOT be seen on the software screen.

Print Blacklist Button

Clicking this will open the Print Blacklist editing screen. Parameters on the Print Blacklist will not print on the Print Parameters printout.

Conditional Blacklist Button

Clicking this will open the Conditional Blacklist editing screen. Even though an entire Base Tab or Group is Blacklisted a single parameter from the Tab or Group can be displayed by using the Conditional blacklist.

Print Conditional Blacklist Button

Clicking this will open the Print Conditional Blacklist editing screen. Even though an entire Base Tab or Group is Print Blacklisted a single parameter from the Tab or Group can be printed by using the Print Conditional blacklist.

Read Only List Button

Clicking this will open the Read Only List editing screen. The parameters values box for parameters on the Read Only List will appear blue in the software and the user can not edit them.

Regular Priority List Button

Clicking this will open the Regular Priority List editing screen. This allows the user to reorganized displayed parameters, base tabs, groups, etc.

Print Priority List Button

Clicking this will open the Print Priority List editing screen. This allows the user to reorganized printed parameters, base tabs, groups, etc.

Dose Min/Max Ranges Button

Clicking this will open the Dose Min/Max Ranges editing screen. The values entered here will be used when clicking the Dose Min/Max Wizard (For Most instruments this is in the Unit fields, in the Unit (1-3) tab(s), located in the DetMem(1-5) tab(s), within the basegroup tab DetMem.

Rate Min/Max Ranges Button

Clicking this will open the Rate Min/Max Ranges editing screen. The values entered here will be used when clicking the Rate Min/Max Wizard or Set Min and Max from Min/Max Range (For Most instruments this is in the Unit fields, in the Unit (1-3) tab(s), located in the DetMem(1-5) tab(s), within the basegroup tab DetMem..

Count Min/Max Ranges Button

Clicking this will open the Count Min/Max Ranges editing screen. The values entered here will be used when clicking the Count Min/Max Wizard (For Most instruments this is in the Unit fields, in the Unit (1-3) tab(s), located in the DetMem(1-5) tab(s), within the basegroup tab DetMem.

PID List Button

Clicking this will open the PID List editing screen. If a new instrument is created to work with Lumeric 2 Software, but is not seen by the software it may be necessary to edit this list. Please contact Ludlum Measurements before editing this list.

4.1 Regular and Print Blacklists

This is a list of wire names that should not be shown on the main screen. These tend to be parameters that are used by wizards that are not intended for general use. Since the wire names can be specified with wildcard values, exceptions can also be specified.



Remove Button

Clicking this will remove the blacklist item making it visible in the main screen of the software after the instrument has been reloaded.

Wire Name

This is the specific name given to a certain parameter in firmware. The exact case sensitive wire name is what is used to blacklist (remove from main screen of software) parameters. This can have one or more wildcard values, denoted by an asterisk (*). This wildcard can represent any number of characters (including no characters). For example, in the previous screenshot the last parameter blacklisted is `DetMem[*]_Unit[*]_Enabled`. This is used to block the user from disabling any units for any detectors. The wildcard is used twice, first to signify that this condition applies to all detectors [0-4] and also applies to all Units [0-2] for those detectors.

Remove Button (within exception)

Clicking this will remove the exception to the blacklist making it visible in the main screen of the software after the instrument has been reloaded.

Exception Wire Name

This is the wire name to exclude from the blacklist. This can also include wildcard values.

Add Exception Button

Clicking this will add a new exception to the blacklist item.

Add Button

Clicking this will add a new blacklist item.

Reset to Factory Rules Button

Clicking this will reset to the current settings to the Factory Rules.

Save Button

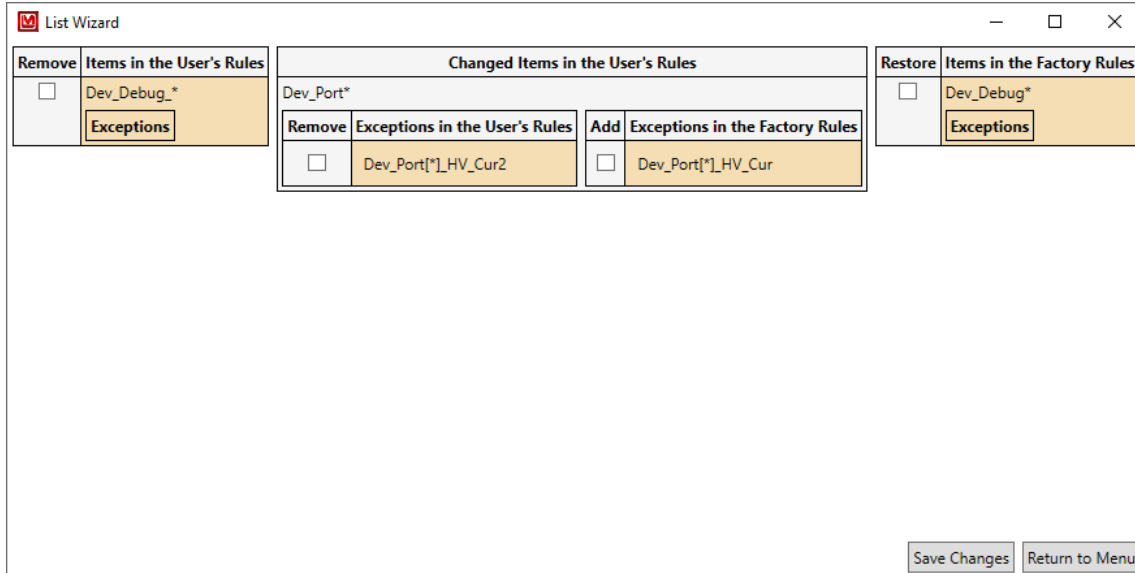
Clicking this will save any changes and returns to the main menu.

Return to Menu Button

Clicking this will return the user to the main menu.

4.2 Regular and Print Blacklists Comparer

This is a list of any differences between the current User's Rules and the factory defaults. It will display "No differences found" if there are no differences. The orange tint is there to help highlight the changes.



Remove Checkbox

Checking this will remove the item from the user's list.

Add Checkbox

Checking this will add the item to the user's list.

Save Changes Button

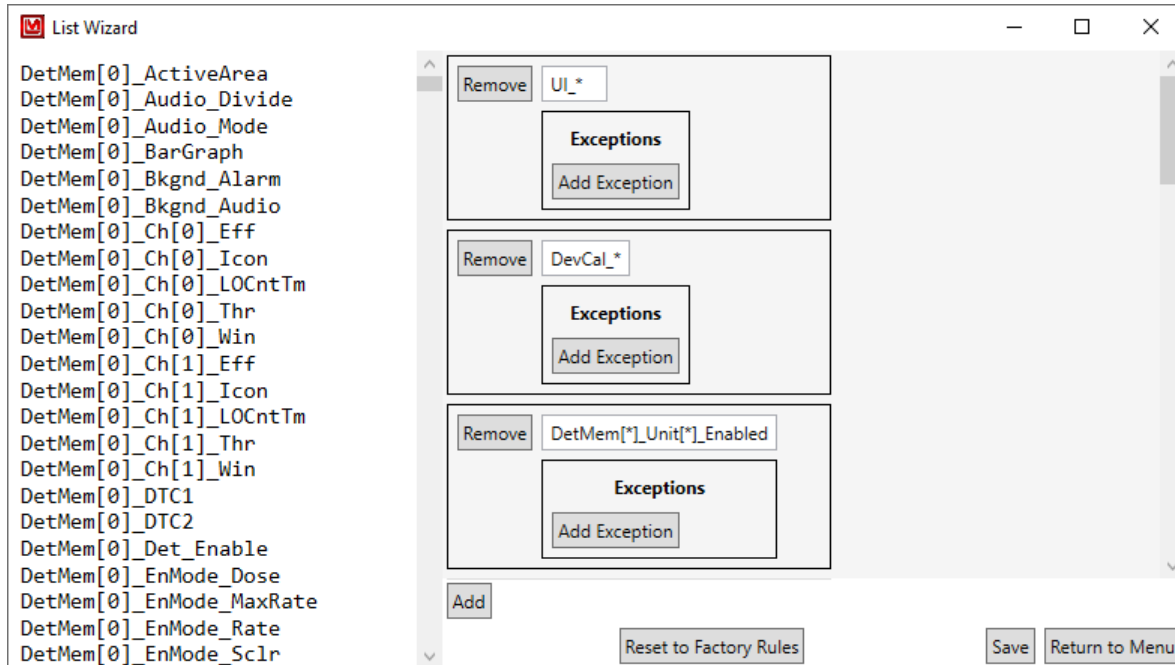
Clicking this will save any changes and returns to the main menu.

Return to Menu

Clicking this will return user to main menu.

4.3 Regular and Print Blacklists With Parameters

This is the normal Blacklist and Print Blacklist along with a display of the parameters of the current instrument. It is similar in every way to the standard Blacklist and Print Blacklist Wizard.

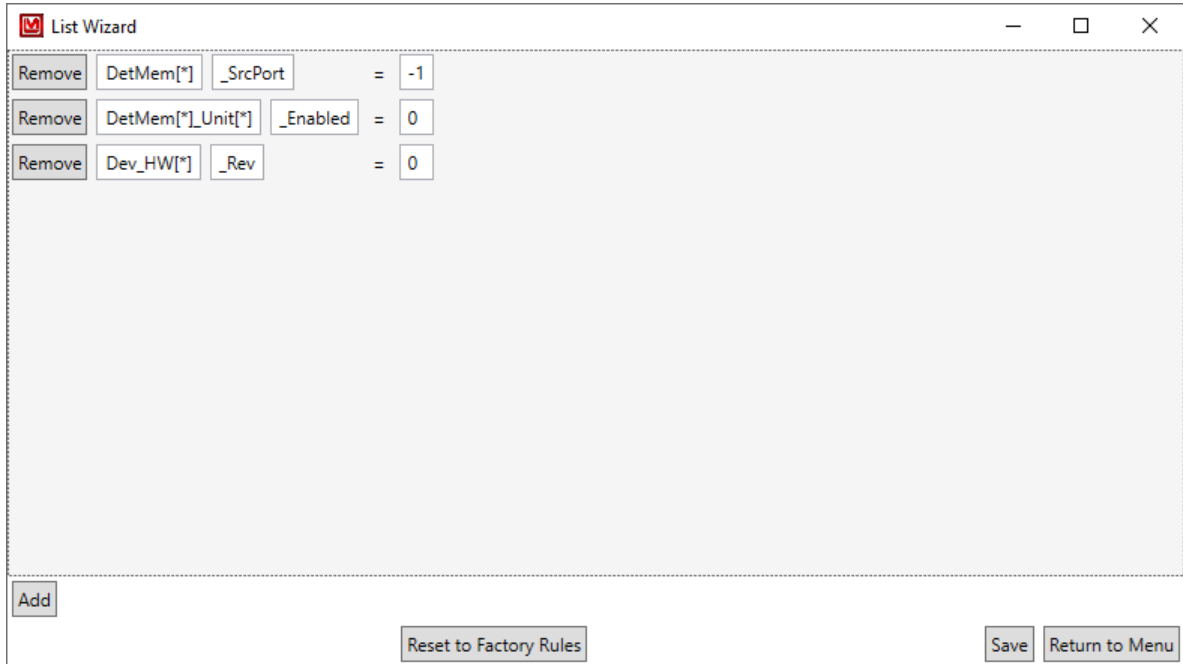


Parameter List

This is the list of parameters of the current instrument.

4.4 Regular and Print Conditional Blacklists

This is a list of wire names that will not be shown on the main screen if it equals the given value. These tend to be parameters that are inapplicable for the current settings of the device, such as disabled Units or Hardware.



Remove Button

Clicking this will remove the conditional blacklist item.

Wire Name (or prefix)

This is either the wire name to conditionally remove, or the initial part of a group of wire names that will all be removed if the specified tail is equal to the value. This can have one or more wildcard values, denoted by an asterisk (*). This wildcard can represent any number of characters (including no characters).

Wire Name (tail)

If this is filled in, then the combined value becomes the triggering value for all wire names that match the prefix value. This can also include wildcard values.

Value

This is a conditional value that determines whether or not the wire name is to be displayed.

Add Button

This adds a new conditional wire name.

Reset to Factory Rules Button

Clicking this will reset to the current settings to the Factory Rules.

Save Button

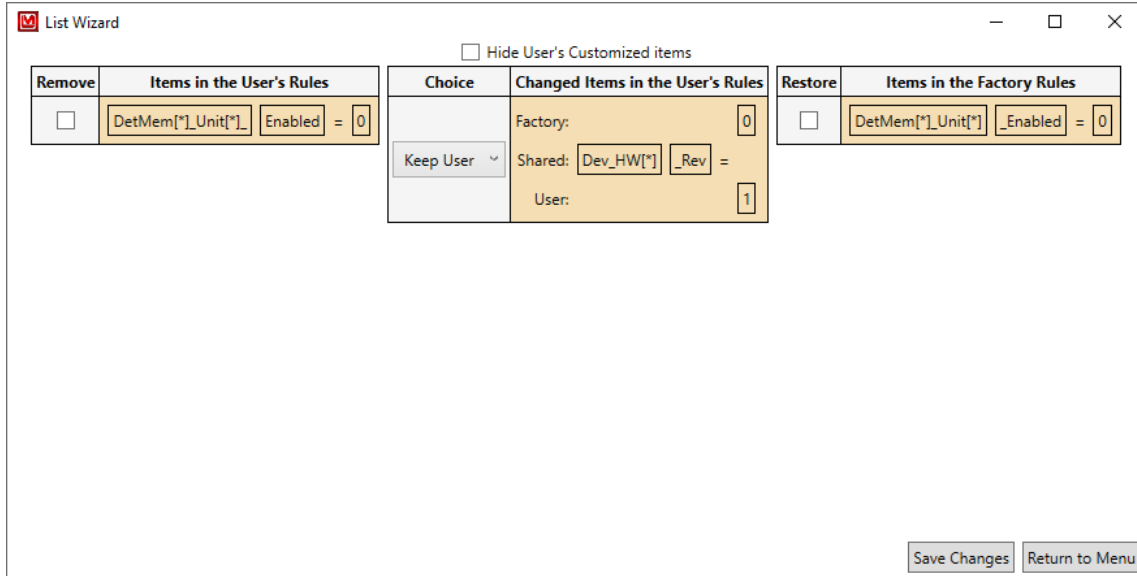
Clicking this will save any changes and returns to the main menu.

Return to Menu Button

Clicking this will return the user to the main menu.

4.5 Regular and Print Conditional Blacklists Comparer

This is a list of any differences between the current User's Rules and the Factory defaults. It will display "No differences found." if there are no differences. The orange tint is there to help highlight the changes.



Hide User's Customized Items Checkbox

Checking this will hide the Changed Items in the User's Rules column.

Remove Checkbox

Checking this will remove the item from the user's list.

Keep Selection

This allows the user to select which version of the item to keep.

Add Checkbox

Checking this will add the item to the user's list.

Save Changes Button

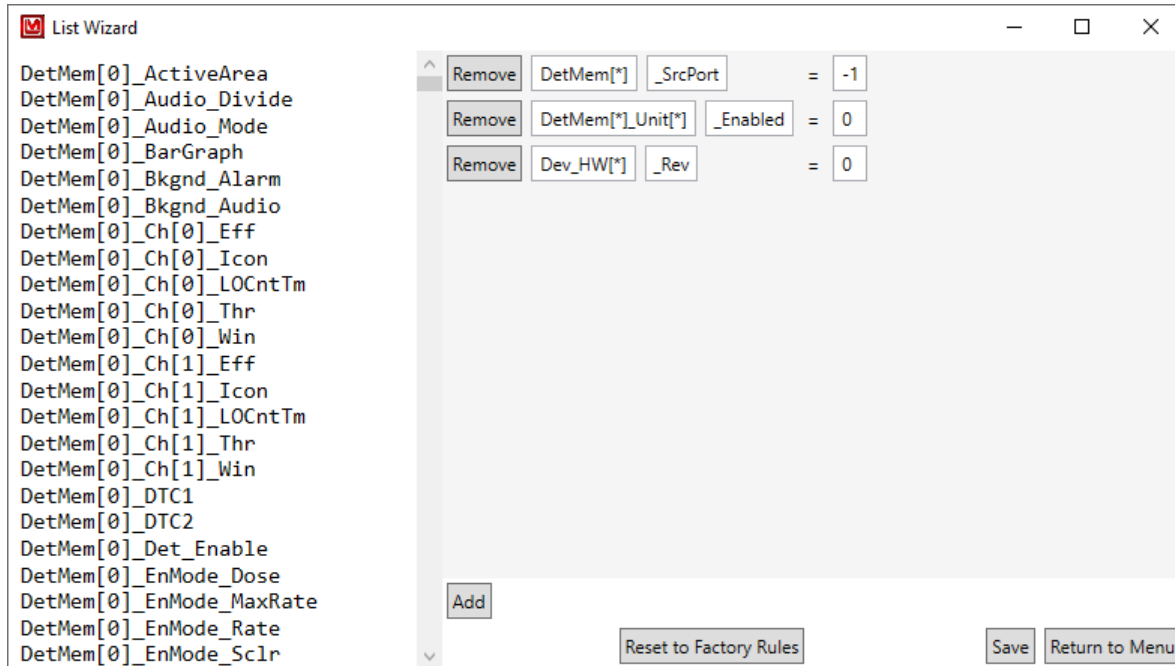
Clicking this will save any changes and returns to the main menu.

Return to Menu

Clicking this will return user to main menu.

4.6 Regular and Print Conditional Blacklists With Parameters

This is the normal Conditional Blacklist and Conditional Print Blacklist along with a display of the parameters of the current instrument. It is similar in every way to the standard Conditional Blacklist and Conditional Print Blacklist Wizard.

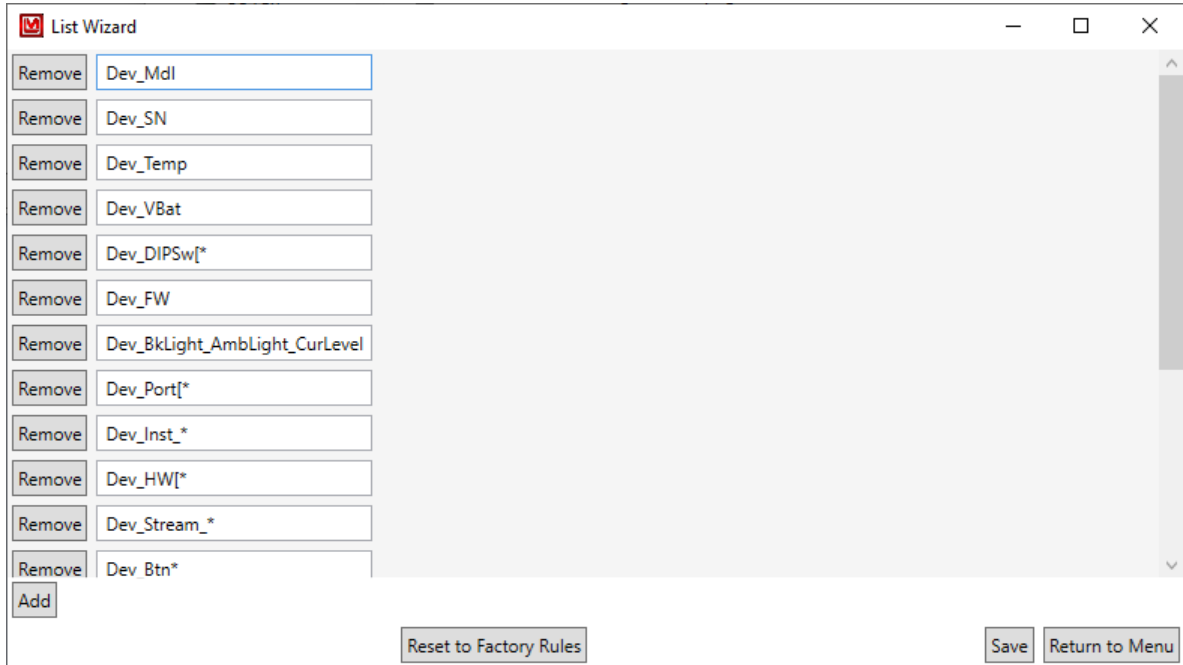


Parameter List

This is the list of parameters of the current instrument.

4.7 Read Only List

This is a list of wire names that should not be able to be set by the user, but only displayed to the user, such as the current battery voltage. It is recommended, but not required, to contain all of the wire names in the Black List. This recommendation is for when something was not intended to be seen, thus it should likely not be able to be changed.



Remove Button

Clicking this will remove the read-only item.

Wire Name

This is the wire name to make read only. It can have one or more wildcard values, denoted by an asterisk (*). This wildcard can represent any number of characters (including no characters).

Add Button

Clicking this will add a new read-only item.

Reset to Factory Rules Button

Clicking this will reset to the current settings to the Factory Rules.

Save Button

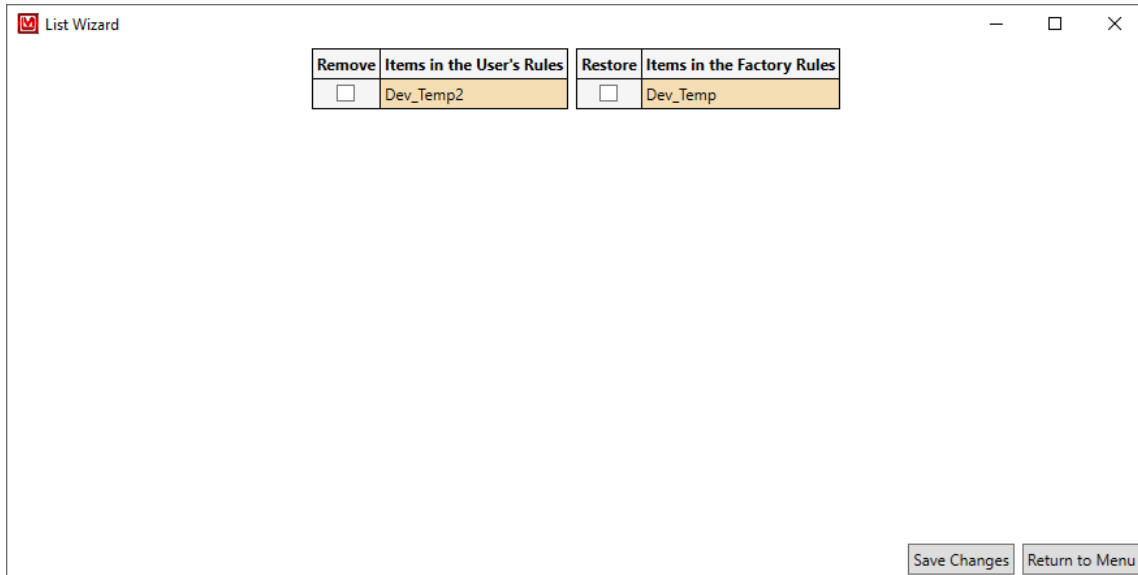
Clicking this will save any changes and returns to the main menu.

Return to Menu Button

Clicking this will return the user to the main menu.

4.8 Read Only List Comparer

This is a list of any differences between the current User's Rules and the Factory defaults. It will display "No differences found." if there are no differences. The orange tint is there to help highlight the changes.



Remove Checkbox

Checking this will remove the item from the user's list.

Add Checkbox

Checking this will add the item to the user's list.

Save Changes Button

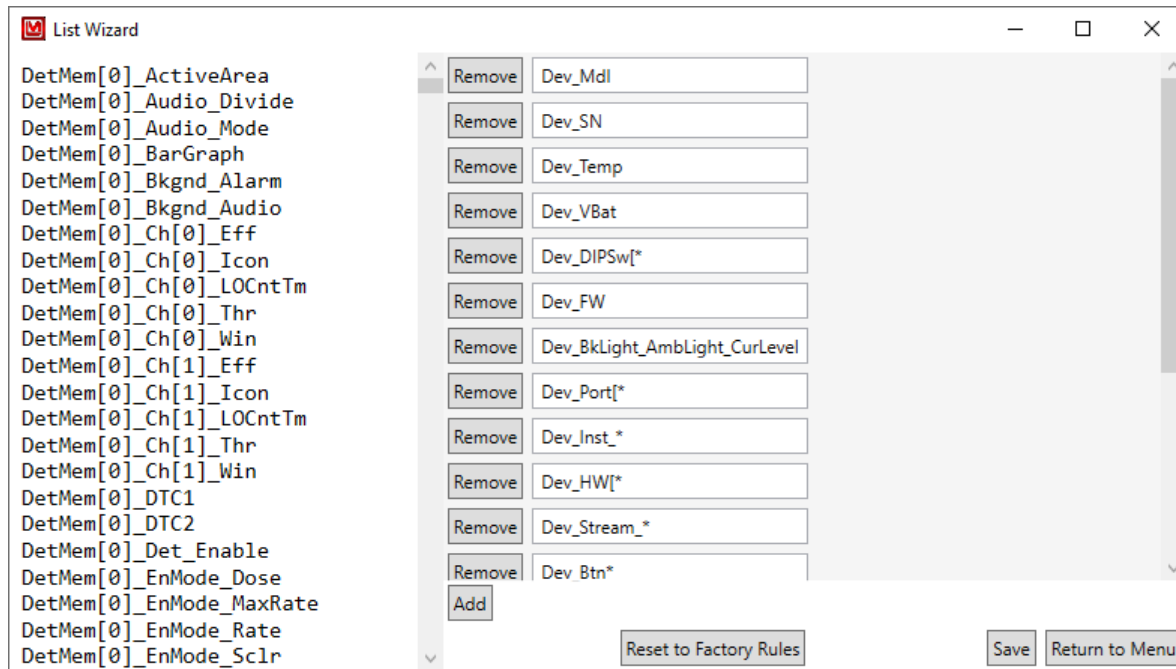
Clicking this will save any changes and returns to the main menu.

Return to Menu

Clicking this will return user to main menu.

4.9 Read Only List With Parameters

This is the normal Read Only List along with a display of the parameters of the current Instrument. It is similar in every way to the standard Read Only List Wizard.



Parameter List

This is the list of parameters of the current instrument.

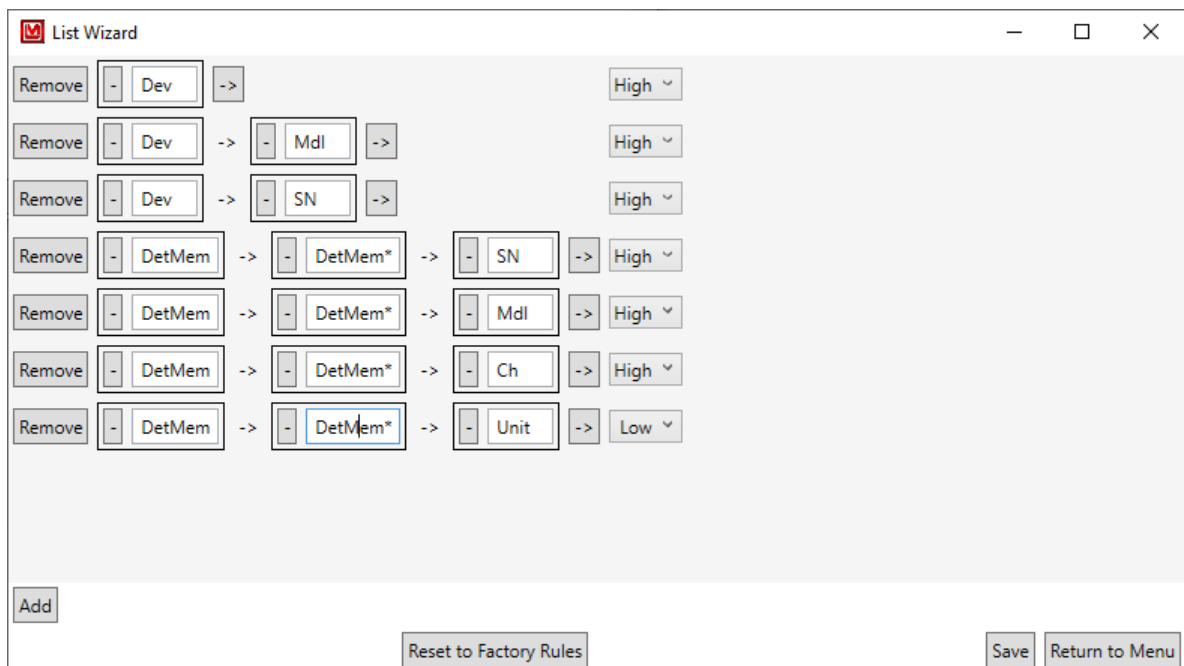
4.10 Regular and Print Priority Lists

This is a list of displayed items to be sorted to the top or bottom of the others in its collection of displayed items. Since this works on display names rather than just wire names, this allows the user to sort entire tabs and groups rather than just fields.

How these display names are generated from the Wire Names is explained in Section 3.4. Some examples from the following image:

- Dev High makes it so that the base group "Dev" will always be sorted before any other base group.
- Dev → Mdl High makes it so that the "Mdl" field inside of "Dev" will always be sorted before any other field. (Please note that this Wizard does not know nor care that this resolves into a field, it will attempt to sort anything named "Mdl" directly inside "Dev").
- Dev → SN High makes it so that the "SN" field inside of "Dev" will always be sorted before anything else. (Please note that Display Items will keep their relative positioning. So, "SN" will come after "Mdl", but this Wizard can not guarantee that).
- DetMem → DetMem* → Unit Low makes it so that the "Unit" group inside of any group that starts with "DetMem" that itself is inside "DetMem" will always be sorted AFTER anything else.

Also, please note that the Print version does not generate a parent group for numbered groups, thus rather than DetMem → DetMem* → Unit Low, it will need DetMem* → Unit Low.



Remove Button

Clicking this will remove the collection of display items.

'-' (Minus) Button

Clicking this will remove the current display item from the collection.

Display Item

This is the name of the display item. This can have one or more wildcard values, denoted by an asterisk (*). This wildcard can represent any number of characters (including no characters). Each subsequent item is one that is directly nested within the previous one.

'→' (arrow) button

Clicking this will add a new display item in the collection.

Priority Selection

This is the priority of the display item. "High" will group all items marked as such within the same display parent to the right or and/or above other items, as appropriate. "Low" will group all items marked as such within the same display parent to the left of and/or below other items, as appropriate.

Add Button

Clicking this will add a new collection of display items.

Reset to Factory Rules Button

Clicking this will reset to the current settings to the Factory Rules.

Save Button

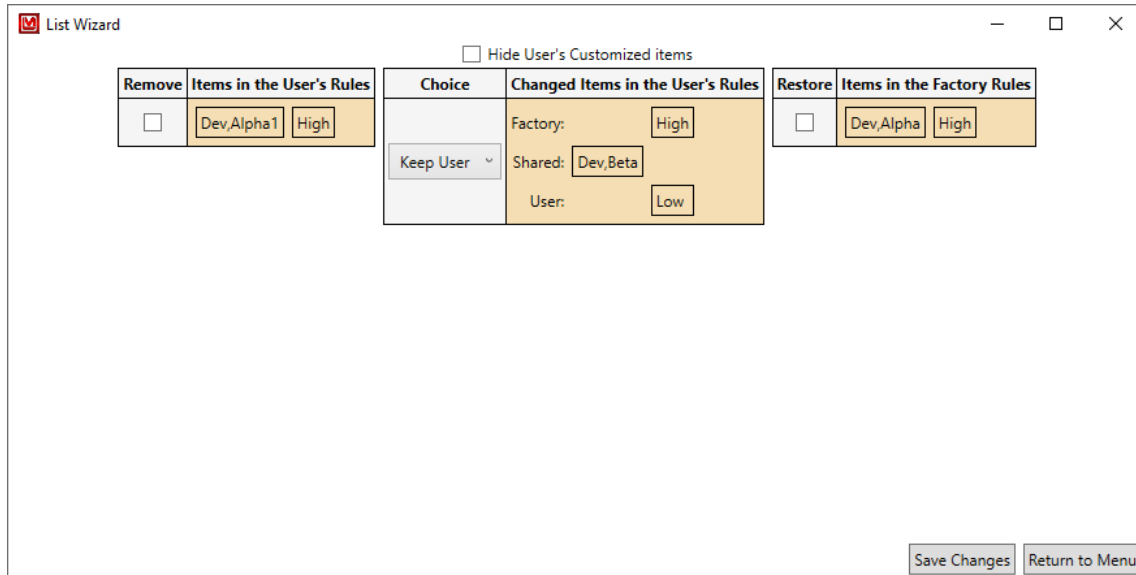
Clicking this will save any changes and returns to the main menu.

Return to Menu Button

Clicking this will return the user to the main menu.

4.11 Regular and Print Priority Lists Comparer

This is a list of any differences between the current User's Rules and the Factory defaults. It will display "No differences found." if there are no differences. The orange tint is there to help highlight the changes.



Hide User's Customized Items Checkbox

Checking this will hide the Changed Items in the User's Rules column.

Remove Checkbox

Checking this will remove the item from the user's list.

Keep Selection

This allows the user to select which version of the item to keep.

Add Checkbox

Checking this will add the item to the user's list.

Save Changes Button

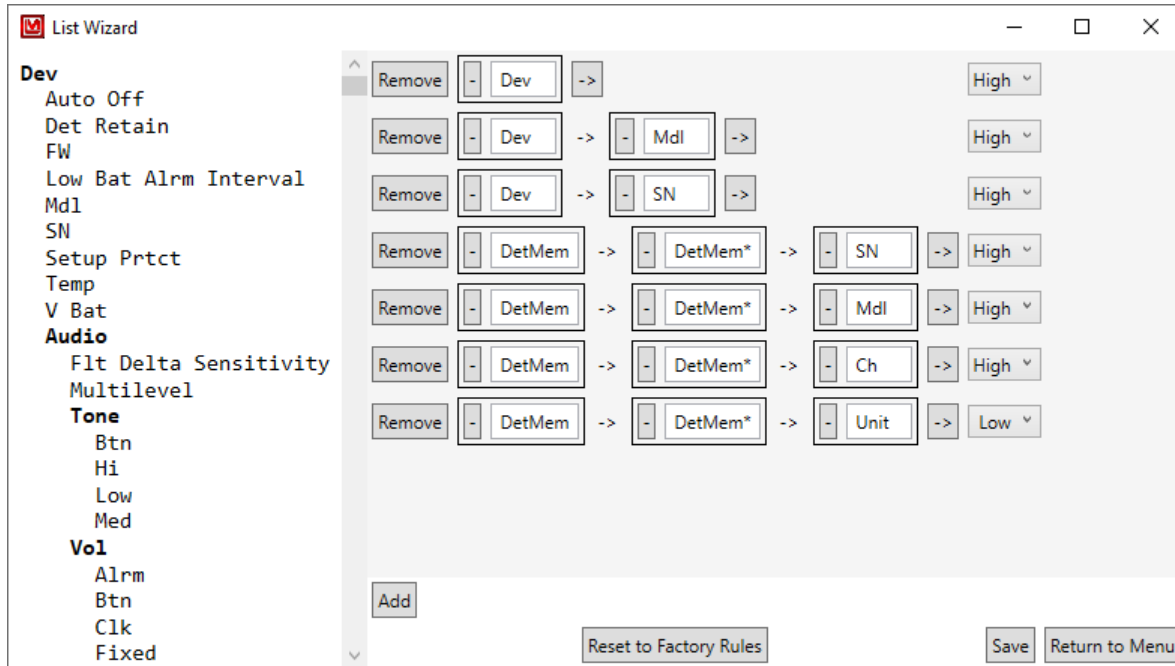
Clicking this will save any changes and returns to the main menu.

Return to Menu

Clicking this will return user to main menu.

4.12 Regular and Print Priority Lists With Parameters

This is the normal Regular Priority List and Print Priority List along with a display of the parameters of the current Instrument. It is similar in every way to the standard Regular Priority List and Print Priority List Wizard.



Parameter List

This is the list of parameters of the current instrument. Bolded items are representations of items that are parents of the indented items.

4.13 Dose, Rate, and Count Min/Max Ranges

This is a list of known instrument model specific minimum and maximum values that said instrument can read.

The screenshot shows the 'List Wizard' window with two instrument model entries. Each entry has a 'Remove' button, a model name, a 'For Every Instrument' dropdown, and a range selection area. The first entry is for model '44-2' with a range of 50.0 m to 000 μ R/h. The second entry is for model '44-6' with a range of 2.50 None to 0.00 m R/h. Both entries have an 'Add Special Range' button. At the bottom of the window, there are 'Add', 'Reset to Factory Rules', 'Save', and 'Return to Menu' buttons.

Remove Button

Clicking this will remove the instrument model and its ranges.

Model Name

This is the name of the model for the special ranges.

Range Application Selection

This allows the user to select whether the Range is applied to every instrument ("For Every Instrument") or only the given instruments ("For Only"). If "For Every Instrument" is selected, any instruments in the Instruments list is ignored.

'-' (Minus) Button

Clicking this will remove the current instrument from the collection.

Instrument Model

This is the name of one of the instruments to only apply the Range to. At least one is required if "For Only" is selected. Can not be blank if "For Only" is selected.

‘→’ (arrow) button

Clicking this will add a new instrument to the collection.

Remove Button (within Special Ranges)

Clicking this will remove the special range from the list of ranges.

Maximum Value

This is the maximum value for the range, from 0.00 to 999.

Maximum Value SI Prefix Selection

This is the maximum value's SI prefix, such as "μ" or "k". "None" is used for no prefix.

Minimum Value

This is the minimum value, restricted to "0.00," "00.0," "000," and "0". The single zero is there to let the Wizard know to not allow decimal places for the minimum value. This is generally useful for count and count-like units where it would be impossible to have a half of a value.

Minimum Value SI Prefix Selection

This is the minimum value's SI prefix, such as "μ" or "k". "None" is used for no prefix.

Unit

This is the unit for the range.

Add Special Range Button

This adds a new special range for the model.

Add Button

This adds a new model with special ranges to respect.

Reset to Factory Rules Button

Clicking this will reset to the current settings to the Factory Rules.

Save Button

Clicking this will save any changes and returns to the main menu.

Return to Menu Button

Clicking this will return the user to the main menu.

4.14 Dose, Rate, and Count Min/Max Ranges Comparer

This is a list of any differences between the current User's Rules and the Factory defaults. It will display "No differences found." if there are no differences. The orange tint is there to help highlight the changes.

The screenshot shows the 'List Wizard' window with a 'Hide User's Customized items' checkbox at the top. The main area is divided into three columns: 'Items in the User's Rules', 'Changed Items in the User's Rules', and 'Items in the Factory Rules'. The 'Items in the User's Rules' column shows a table with 'Test For Every Instrument' and a 'Ranges' table with Max (50.0 m), Min (000 μ), and Units (R/h). The 'Items in the Factory Rules' column shows a table with '44-2 For Every Instrument' and a 'Ranges' table with Max (50.0 m), Min (000 μ), and Units (R/h). The 'Changed Items in the User's Rules' column is further divided into 'Instruments in the User's Rules' (3078a), 'Instruments in the Factory Rules' (3078i), and 'Ranges'. The 'Ranges' section has a 'Choice' dropdown set to 'Keep User' and a 'Changed Ranges in the User's Rules' table with Max (10.0 None), Min (000 μ), and Units (Ci/h). Below this is a 'Shared' table with Max (00.0 m) and Units (R/h), and a 'User' table with Max (1.10 k) and Units (R/h). At the bottom right are 'Save Changes' and 'Return to Menu' buttons.

Hide User's Customized Items Checkbox

Checking this will hide the Changed Ranges in the User's Rules column within the Changed Items in the User's Rules column.

Remove Checkbox

Checking this will remove the item from the user's list.

Keep Selection

This allows the user to select which version of the item to keep.

Add Checkbox

Checking this will add the item to the user's list.

Save Changes Button

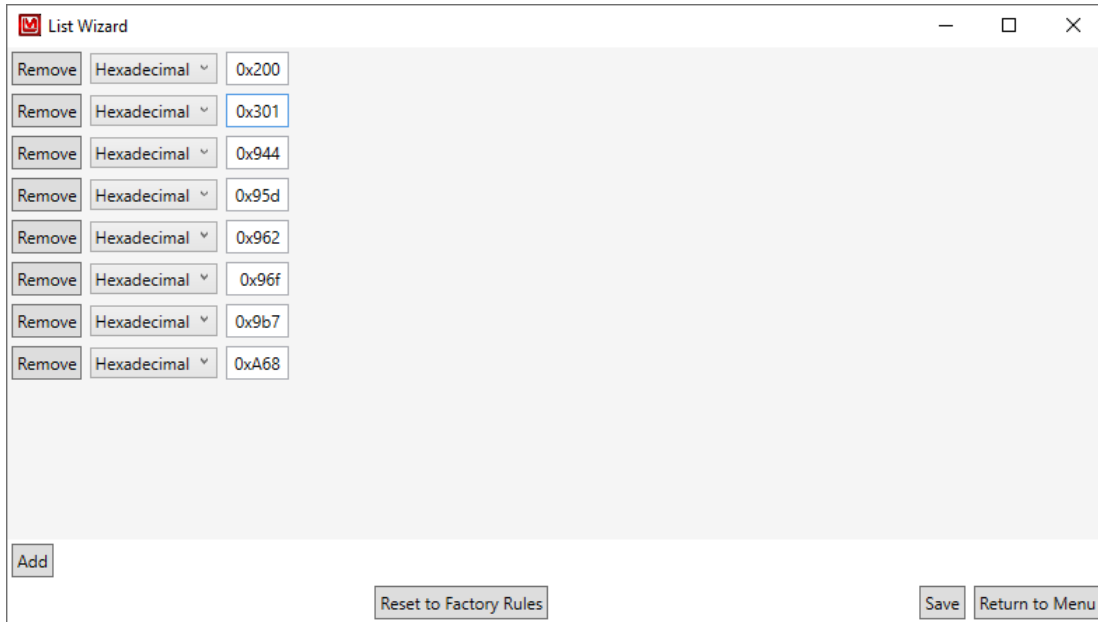
Clicking this will save any changes and returns to the main menu.

Return to Menu

Clicking this will return user to main menu.

4.15 PID List

This is the list of Product ID values to identify Lumic compatible Ludlum instruments.



Remove Button

This removes the Product ID from the list.

Number Type Selection

This is the type of number the Product ID is entered in. “Binary” for 1s and 0s, “Octal” for 0-7, “Decimal” for 0-9 (typical numbers), and finally “Hexadecimal” for 0-f or 0-F.

Product ID Value

This is the Product ID to use. This must be numeric digits only, with an optional prefix of “0x” or “0X” for hexadecimal numbers.

Add Button

This adds a new Product ID to the list.

Reset to Factory Rules Button

Clicking this will reset to the current settings to the Factory Rules.

Save Button

Clicking this will save any changes and returns to the main menu.

Return to Menu Button

Clicking this will return the user to the main menu.

4.16 PID List Comparer

This is a list of any differences between the current User's Rules and the Factory defaults. It will display "No differences found." if there are no differences. The orange tint is there to help highlight the changes.



Remove Checkbox

Checking this will remove the item from the user's list.

Add Checkbox

Checking this will add the item to the user's list.

Save Changes Button

Clicking this will save any changes and returns to the main menu.

Return to Menu

Clicking this will return user to main menu.

POSSIBLE WIZARDS

5.1 Possible Buttons and Wizards

These “Wizards” are simply buttons that will set certain parameters to appropriate values.

Simple Button Wizards

Set to Clock (if Applicable for Real Time Clock Group)

This sets the real-time clock parameters to the current system time.

Set to Clock (if Applicable for Calibration Time Group)

This sets the calibration time parameters to the current system time.

Set both to Clock (Applicable if Real Time Clock and Calibration Time are in the Same Group)

This sets the real-time clock and calibration time parameters to the current system time.

Set Min and Max from Mix/Max Range (if Applicable for Rate)

This sets the rate’s minimum and maximum value to the values that the Rate Min Max Wizard uses, if the specified detector model can be found. Note that the user should select the desired unit type (R/h or Sv/h) before selecting this Simple Button Wizard.

Set to Disabled (if Applicable for Calibration Time Group)

This sets the calibration time parameters to zero to indicate it is disabled.

Full Wizards

These “wizards” open their own windows.

Dose Min Wizard (if Applicable for Dose)

See Dose Min Wizard.

Rate Min Max Wizard (if Applicable for Rate)

See Rate Min Max Wizard or Rate Min Max Zero Only Wizard (as appropriate).

Count Min Wizard (if Applicable for Count)

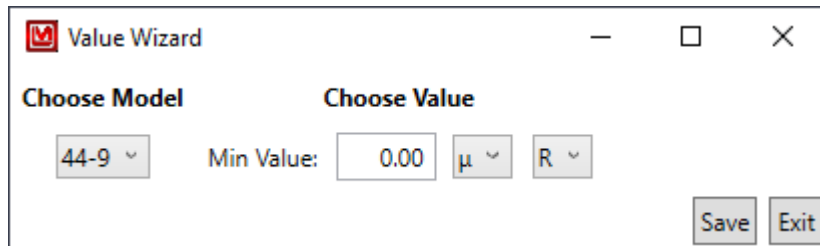
See Count Min Wizard or Count Min Max Zero Only Wizard (as appropriate).

Unit Min Max Wizard (if Applicable for Unit)

See Unit Min Max Wizard.

5.2 Dose Min Wizard

This Wizard provides a way to set the Dose Minimum value that can utilize a known list of minimum and maximum allowed values for the given detector models to better constrain the minimum value. This list can be found (and modified) via the List Wizard (Section 4) and specifically the Dose Min Wizard (Section 4.13).



Choose Model

This allows the user to choose from any known preset limits. If the originally selected detector model is not found in the preset list (or the units are not found in the preset list), it is added automatically with the limits of the device.

Min Value

This is the minimum value, which is constrained by both the preset list and the device's constraints.

Save

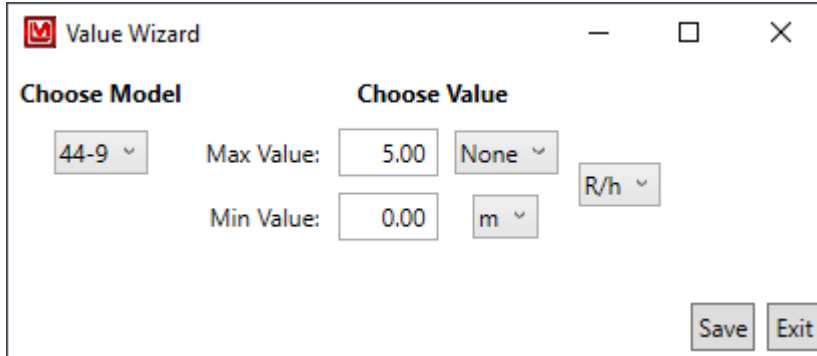
When clicking this, the program attempts to save the value to the device. If successful, the window will close.

Exit

Selecting this closes the window.

5.3 Rate Min Max Wizard

This Wizard provides a way to set the Rate Minimum and Maximum values that can utilize a known list of minimum and maximum allowed values for the given detector models to better constrain the values. This list can be found (and modified) via the List Wizard (Section 4) and specifically the Rate Min/Max Wizard (Section 4.13).



Choose Model

This allows the user to choose from any known preset limits. If the originally selected detector model is not found in the preset list (or the units are not found in the preset list), it is added automatically with the limits of the device.

Max Value

This is the maximum value, which is constrained by both the preset list and the device's constraints.

Min Value

This is the minimum value, which is constrained by both the preset list and the device's constraints.

Save

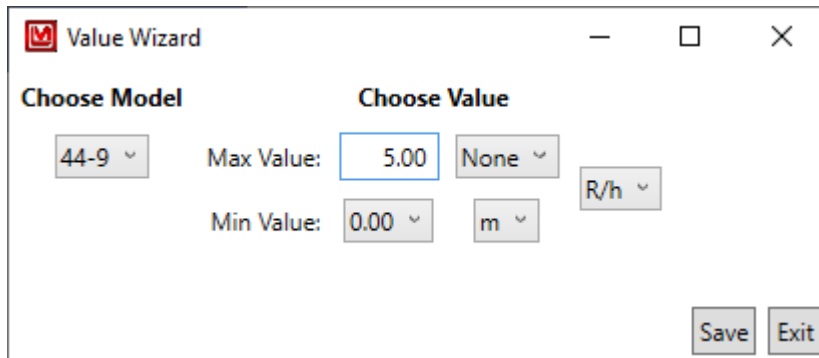
When clicking this, the program attempts to save the value to the device. If successful, the window will close.

Exit

Selecting this closes the window.

5.4 Rate Min Max Wizard (Zero Min Value Only)

This version of the Rate Min Max Wizard is for devices that only allow the Min Value to be zero, represented by a drop-down list of currently valid values.



Choose Model

This allows the user to choose from any known preset limits. If the originally selected detector model is not found in the preset list (or the units are not found in the preset list), it is added automatically with the limits of the device.

Max Value

This is the maximum value, which is constrained by both the preset list and the device's constraints.

Min Value

This is the minimum value, which is constrained by both the preset list and the device's constraints.

Save

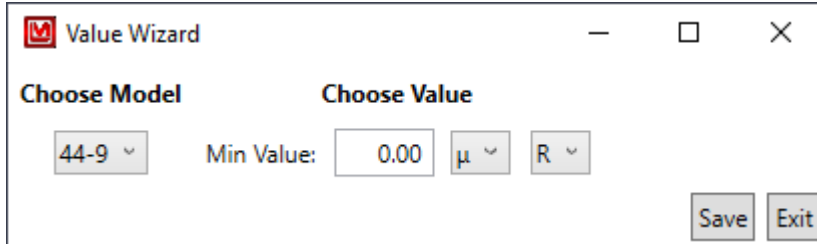
When clicking this, the program attempts to save the value to the device. If successful, the window will close.

Exit

Selecting this closes the window.

5.5 Count Min Wizard

This Wizard provides a way to set the Count Minimum value that can utilize a known list of minimum and maximum allowed values for the given detector models to better constrain the minimum value. This list can be found (and modified) via the List Wizard (Section 4) and specifically the Count Min Wizard (Section 4.13).



Choose Model

This allows the user to choose from any known preset limits. If the originally selected detector model is not found in the preset list (or the units are not found in the preset list), it is added automatically with the limits of the device.

Min Value

This is the minimum value, which is constrained by both the preset list and the device's constraints.

Save

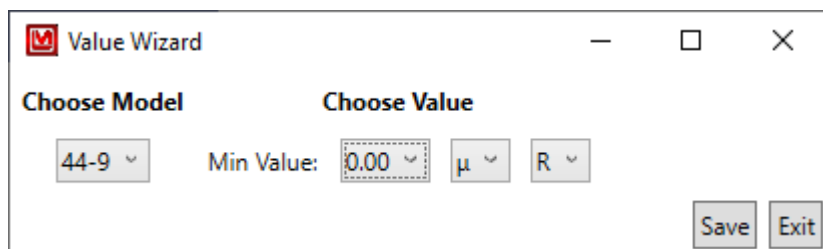
When clicking this, the program attempts to save the value to the device. If successful, the window will close.

Exit

Selecting this closes the window.

5.6 Count Min Wizard (Zero Min Value Only)

This version of the Count Min Wizard is for devices that only allow the Min Value to be zero, represented by a drop-down list of currently valid values.



Choose Model

This allows the user to choose from any known preset limits. If the originally selected detector model is not found in the preset list (or the units are not found in the preset list), it is added automatically with the limits of the device.

Min Value

This is the minimum value, which is constrained by both the preset list and the device's constraints.

Save

When clicking this, the program attempts to save the value to the device. If successful, the window will close.

Exit

Selecting this closes the window.

5.7 Unit Min Max Wizard

This Wizard provides a way to set the Dose Minimum Value, Rate Minimum and Maximum Values, and Count Minimum value that can utilize a known list of minimum and maximum allowed values for the given detector models to better constrain the values. These lists can be found (and modified) via the List Wizard (Section 4).

Choose Model

This allows the user to choose from any known preset limits. If the originally selected model is not found in the preset list (or the units are not found in the preset list), it is added automatically with the limits of the device

Dose Min Value

This is the minimum value, which is constrained by both the preset list and the device's constraints.

Rate Max Value

This is the maximum value, which is constrained by both the preset list and the device's constraints.

Rate Min Value

This is the minimum value, which is constrained by both the preset list and the device's constraints.

Count Min Value

This is the minimum value, which is constrained by both the preset list and the device's constraints.

Save

When clicking this, the program attempts to save the value to the device. If successful, the window will close.

Exit

Selecting this closes the window.

TROUBLE SHOOTING

6.1 Missing .Net Framework

DotNet Framework comes with most standard Windows desktops. However, if for some reason while installing or after installation, you are still missing .NetFramework, please go to MSDN and download 4.5 Framework for your machine.

6.2 No devices showing up

1. Check to make sure everything is properly connected.
2. If that is correct, check to see if Microsoft Windows is still installing the drivers for the instrument. This may take a few moments. (If you have multiple new instruments on a daily basis, “Calibration on different devices” may speed this up.
3. Make sure the instrument is on, and if it is, try turning it off and then on again.
4. Change USB cable.
5. Check USB driver. Sometimes while installing the driver, you may run into an issue, i.e. power shuts off, instrument unplugged, Windows update, etc. This may cause your driver to become corrupt, and the instrument will no longer show in Lumeric. To check for this issue, follow these steps.
 - a) Unplug all other instruments. Plug in and turn on the instrument.
 - b) Open “Device Manager.”
 - c) Expand the Human Interface Devices drop-down menu. If you can see your instrument’s family name, i.e. Model 3000, Model 30, under the Human Interface Device Section, then Issue 5 is the cause. If you cannot, please call Ludlum Measurements.
 - d) Right-click on appropriate family name instrument and select uninstall.
 - e) Let Windows uninstall the driver and it should auto-reinstall the Instrument.
 - f) When Windows shows the driver has been installed successfully, re-open Lumeric and see if menu is still empty.

If none of the above solves your issue, please feel free to call Ludlum Measurements.

6.3 Calibration on different devices – first plug in

If your computer is running Windows 7 or higher, when a new device is connected to your computer, Windows may spend up to 15 minutes searching for the drivers through Windows update. This is unnecessary and time consuming if you are plugging in different new instruments. In order to avoid this, we need to change some system settings on handling drivers.

Windows 7

1. Click Start, right-click "Computer," and choose Properties.
2. In the Tasks list, click Advanced System Settings.
3. On the System Properties dialog box, click the Hardware tab, and then click Windows Update Driver Settings.
4. Then select "only if not found on local machine."

Windows 8 and 10

Unfortunately for Windows 8 (and higher), you only get the choice of using Windows Update always or never, which is even less helpful.

1. Search for "Change device install" in the Windows 8 Start menu and select "change device installation settings."
2. In answer to the question "do you want Windows to download driver software" choose "no, let me choose what to do," then select "never" and save changes.

REVISION HISTORY

Please note that, like the Software's Change Log, Bolded Items are updated List Wizard items. Thus if you have made any changes to said list, please use the appropriate List Wizard to check or merge the updates into your custom list.

- 2.6.0.0
 - Lumic
 - * Added a warning to not allow more than one copy of Lumic 2 from running at a time.
 - * Added in a "Compressed" Print for the Parameters.
 - * Added a way to open the manual from the software.
 - * Fixed a bug where certain devices would have their Rate Min Max values set to 999k and 0 when a valid Rate Min Max isn't found (rather than not setting it at all).
 - * Fixed a bug where the Model 30's Rate Max value was not sent to the Rate Min Max Wizard correctly.
 - Plateau
 - * For Alpha/Beta Plateaus, added a display of all background readings in the Uniformity Check and removed the Source Type selection for opening the Uniformity Check as the Uniformity Check can make the choice on its own.
 - **Priority List**
 - * Updated. If you have customized this list, see Section 4.11 for how to incorporate changes.
 - **Print Priority List**
 - * Updated. If you have customized this list, see Section 4.11 for how to incorporate changes.
 - **Rate Range List**
 - * Updated. If you have customized this list, see Section 4.14 for how to incorporate changes.
- 2.5.0.0

- Luminic
 - * Fixed bug where a maximum range of zero would allow non-zero values (the device would still reject it).
 - * Added Images and Remote Displays for the 3007(B/i), 30, 35, and 79 Models.
 - * Added Expanded_uint8 MetaData type for the Model 30 family.
- Min Max Wizard
 - * Fixed bug where a maximum range of zero would allow non-zero values (the device would still reject it).
- Chi Squared Wizard
 - * Created.
- **Blacklist**
 - * Updated.
- **Print Blacklist**
 - * Updated.
- **Read Only List**
 - * Updated.
- 2.4.0.0
 - Luminic
 - * Added support for the 3004(i).
 - * Fixed a bug where the 3003(i), 3014, and 3078(i) would not show the Alarm indicator when streaming the Remote Display and the device had an error (such as Loss of Counts).
- 2.3.1.0
 - Luminic
 - * Fixed a bug where, if an error occurred trying to log in, the error would not be displayed.
 - Plateau
 - * On a fresh install, the Count Rate Display's numerical value for the Plateau is empty, causing a crash on Start.
 - * Added in a checkbox in the Setup screen that will hide the Date in the Print Sheet.
- 2.3.0.0
 - Luminic
 - * Fixed the parsing so that less than Micro will shift the decimal so that it would be Micro - and similarly for values greater than Mega.
 - * Fixed bug where Plateau would try to call the wrong parameter for 3005s and 3006s.

-
- * Updated Remote Display to show for new value of 3002's Model Number (was "M3002", will now be "Model 3002").
 - Plateau
 - * Fixed bug where loading a Single Channel, No Background, Cps/uCi Efficiency would crash the program.
 - * Fixed bug where the Backgroundless version of Efficiency is always used for the Uniformity Check.
 - * Fixed bug where No Background Uniformity printed the wrong title for the Efficiency.
 - List Wizard
 - * Fixed bug where Print Blacklist and Print Priority List would saved as the regular versions instead.
 - * Added the ability to make ranges that are specific to certain Instruments for the Min/Max Range list.
 - * Added the ability to hide any customized Values (or at least values that appear to be customized) in the Comparison screens (if applicable).
 - Min/Max Wizard
 - * Fixed bug that didn't show an error for drop downs in certain situations.
 - **Rate Range List**
 - * Updated. If you have customized this list, see Section 4.14 for how to incorporate changes.
- 2.2.1.0
 - Lumic
 - * Quick bug fix.
 - **Rate Range List**
 - * Updated. If you have customized this list, see Section 4.14 for how to incorporate changes.
 - 2.2.0.0
 - Lumic
 - * Added a dedicated Remote Display for the 3000, 3001, 3002, 3005, 3006, 3019, and 3276 with extra long presses for the buttons.
 - * Add in a special version of the Set Min and Max Rate button for the 3002 that sets the max cps to 20.0k.
 - Plateau
 - * When the user took a background and then takes a Uniformity Check, the option to not use the background now says "Does not use background" for clarity.
 - Rate Min/Max Wizard
-

- * Fixed bug where cpm, cps, dpm, and dps fallback values (i.e. if not found in the range list) would not let the user set the min value to 0.00.
- Count Min Wizard
 - * Fixed bug where cpm, cps, dpm, and dps fallback values (i.e. if not found in the range list) would not let the user set the min value to 0.00.
- **Rate Range List**
 - * Updated. If you have customized this list, see Section 4.14 for how to incorporate changes.
- 2.1.0.0
 - Lumic
 - * Added the ability to translate the error from the device, rather just showing the error code.
 - * Changed the error "X" into a button that, when clicked, will re-read the value from the device.
 - * Added a dedicated Remote Display for the 3000, 3001, 3002, 3005, 3006, 3019, 3276, and 3277.
 - * Added in Wizard Support for the 3000, 3001, 3002, 3005, 3006, 3019, 3276, and 3277 for the following Wizards: Detector Calibration, Plateau, Count Min, Rate Min/Max, and Set Rate Min/Max.
 - * Added buttons for the Calibration Constant Only and Calibration and Dead Time Constants versions of the Detector Calibration Wizard.
 - List Wizards
 - * Renamed Scaler to Count in Wizards.
 - **Blacklist**
 - * Updated. If you have customized this list, see Section 4.2 for how to incorporate changes.
 - **Print Blacklist**
 - * Updated. If you have customized this list, see Section 4.2 for how to incorporate changes.
 - **Read Only List**
 - * Updated (and removed Dev_Btn*). If you have customized this list, see Section 4.8 for how to incorporate changes.
 - **Priority List**
 - * Updated. If you have customized this list, see Section 4.11 for how to incorporate changes.
 - **Print Priority List**
 - * Updated. If you have customized this list, see Section 4.11 for how to incorporate changes.

- 2.0.0.20

-
- Lumic
 - * Added in the ability to stop Auto Login from the main screen.
 - * Added ability for the software to ignore a FIPS policy check, which would stop the software from reading and writing to the software's User data.
 - List Wizards
 - * Made the Dose/Rate/Scaler Min/Max List Wizard default to None rather than Yotta and Yocto for the Metric Prefixes/SI Units.
 - 2.0.0.19 (Alpha)
 - List Wizards
 - * Minor bug fixes.
 - 2.0.0.18 (Alpha)
 - Lumic
 - * Added a new button Wizard that sets the Calibration Time values to Zero.
 - * Added the ability to create new User Profiles, rather than just changing the current one.
 - * Changed the icons of the "Configuration" version of the software to be blue to help differentiate it.
 - List Wizards
 - * Added a special version that shows the parameters of the currently connected Instrument (and a parsed version for the Priority List).
 - * Added a Comparer Wizard for each List that shows the difference between the current User's Rules/Settings and the Factory defaults.
 - * Added a way to reset the User's Rules/Settings to the Factory version.
 - * Made the Save buttons also return to the Menu.
 - 2.0.0.17 (Alpha)
 - Lumic
 - * Made Float Multiplier fields take "xxxx." and ".xxxxx" values, as well as more than three digits correctly.
 - * Added "signed long" meta data type.
 - * Allowed up to 7 parameters to be streamed.
 - * Made the Load Parameters skip any parameters in the Read Only List.
 - 2.0.0.16 (Alpha)
 - Lumic
 - * Added images for 3003, 3014, and 3078
 - * Added icons to the software.
 - * Re-added "Reopen Settings" button.
 - List Wizards
-

- * Added User specific files for when the User makes changes.
- Plateau
 - * Fixed crash where loading a plateau when it's background was not fully taken.
- 2.0.0.15 (Alpha)
 - Lumeric
 - * Added Connect and Disconnect buttons, removed automatic connection.
 - * Removed Refresh and "Open Settings" buttons.
 - * Renamed "Reload Parameters" to "Reload Instrument" button and it now closes any open tabs.
 - * Added warning message that the device might be only Lumeric 1.0 compatible.
 - * Fixed bug in Float Multiplier where floating point rounding errors would make invalid values.
 - * Added Conditional Blacklist and Inserted Controls to the check for skipping parameters.
- 2.0.0.14 (Alpha)
 - Lumeric
 - * Stopped the HID Reader from throwing an exception if it failed to read the PID or VID (it now just skips it).
 - * Added ability to skip over parameters if it is in the Blacklist AND Print Blacklist.
 - * Added ability to stop asking for Meta Data if the first one was invalid.
 - **Rate Range List**
 - * Updated. If you have customized this list, see Section 4.14 for how to incorporate changes.
- 2.0.0.13 (Alpha)
 - Lumeric
 - * Made all Text Boxes on the main screen have a max width.
 - List Wizards
 - * Added initial Priority Lists.
 - **Read Only List**
 - * Updated. If you have customized this list, see Section 4.8 for how to incorporate changes.
- 2.0.0.12 (Alpha)
 - Lumeric
 - * Reordered Fields to be sorted before Tabs and Groups.

-
- 2.0.0.11 (Alpha)
 - Lumic
 - * Added the ability to save parameters with "Ctrl + S"
 - * Added ability to use the mouse wheel to scroll anywhere.
 - * Added new Float Multiplier data type.
 - Plateau
 - * Added ability to print both Uniformity checks if taken.
 - **Blacklist**
 - * Updated. If you have customized this list, see Section 4.2 for how to incorporate changes.
 - **Print Blacklist**
 - * Updated. If you have customized this list, see Section 4.2 for how to incorporate changes.
 - 2.0.0.10 (Alpha)
 - Lumic
 - * Made CSV the default file type for saving Parameters.
 - Plateau
 - * Added ability to preform Alpha/Beta Uniformity Checks.
 - * Added warning if the Model Number, Threshold(s), or Window(s) are different.
 - 2.0.0.9 (Alpha)
 - Lumic
 - * Allowed the Min/Max controls to accept "0XY" and "00X" as mantissa values.
 - * Forced the real time stream to stop running on start up.
 - Plateau
 - * Added ability to show Window for the last or only channel.
 - Min/Max Wizards
 - * Added in initial Dose, Rate, and Scaler Min/Max Wizards.
 - **Blacklist**
 - * Updated. If you have customized this list, see Section 4.2 for how to incorporate changes.
 - 2.0.0.8 (Alpha)
 - Lumic
 - * Initial Alpha Release
-